

Instruction 拼裝說明書



1:32 scale

F-86D “セイバードッグ”

F-86D

“SABRE DOG”



F-86D “佩刀狗” 全天候戰鬥機

ZM32007R

READ BEFORE ASSEMBLY

在組合您的模型之前，請充分閱讀本冊說明書。組合模型您需要如下物品（需另購）：模型膠水；一把模型鉗或一把用于將零件從框架上切下的模型筆刀。筆刀同樣可以用來修整零件的合模綫。祝您制作愉快！

Before assembling your model kit, read through these instructions carefully. To assemble this kit, you will need Plastic glue (not include). A pair of side cutter or a sharp modelling knife is required for removing parts from the frame. Plastic mould lines can be removed with the modelling knife.



請注意
Special instructions



隨愛好選擇
Optional



組合完成
Finished Assembly



制作兩組
Make Two



配重
Weight



塗色
Painting



無需膠粘
Do Not Cement



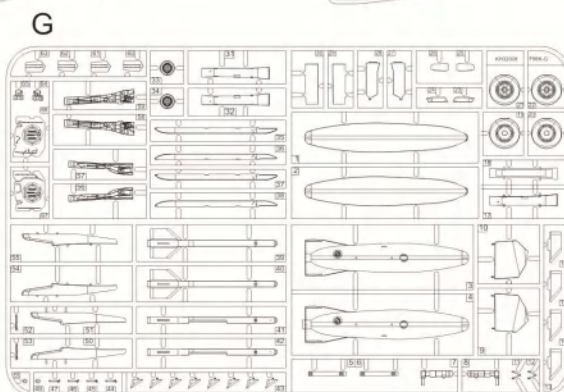
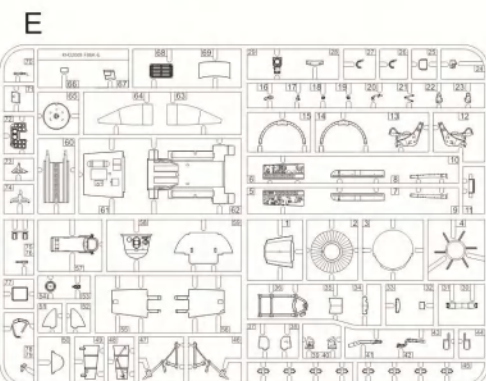
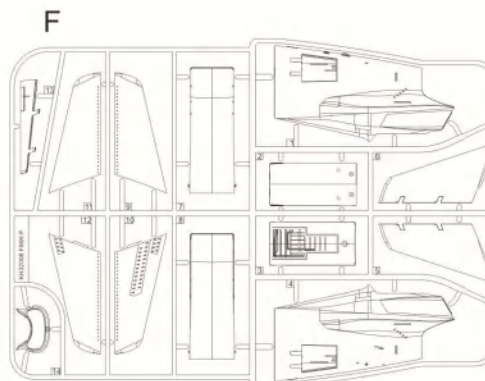
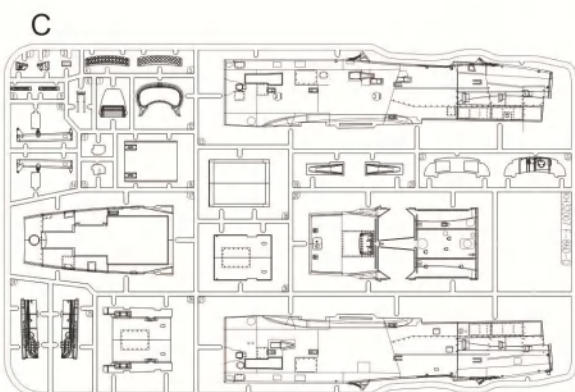
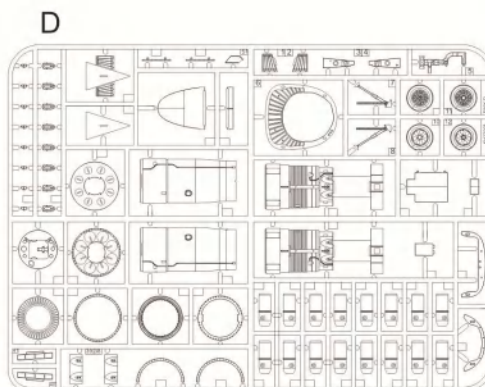
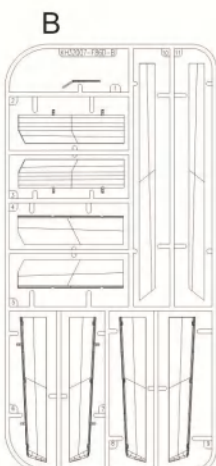
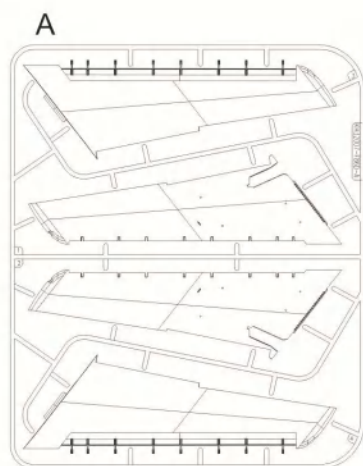
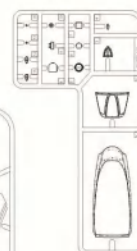
對側
Opposite

部品圖 PARTS

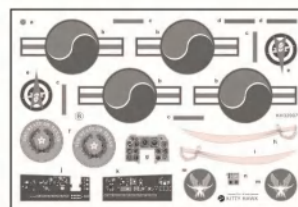
蝕刻片PE

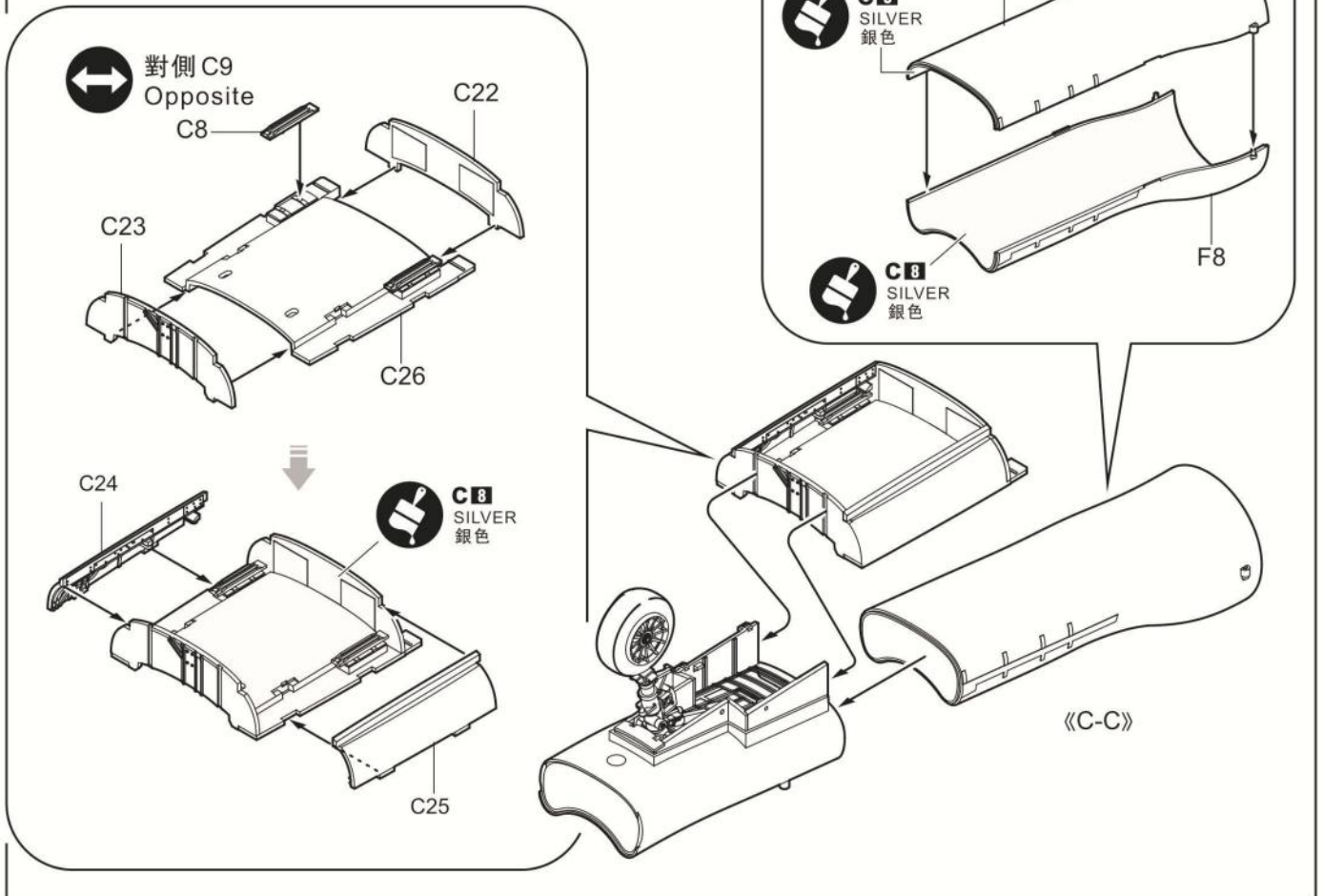
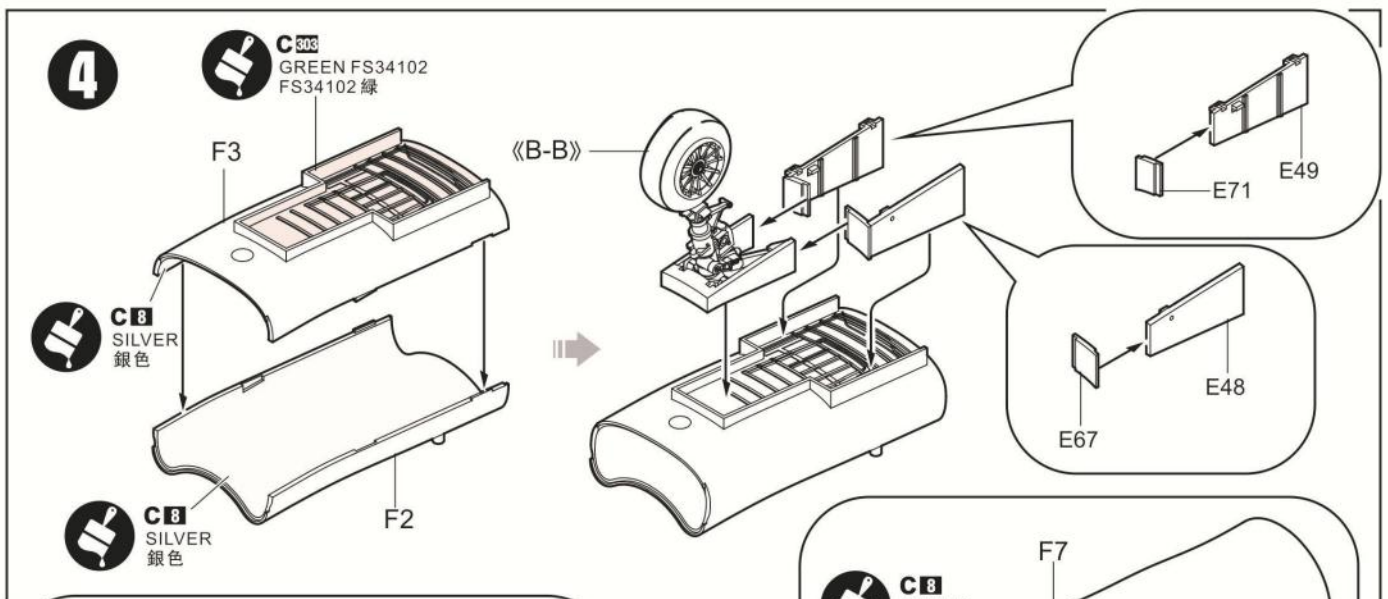
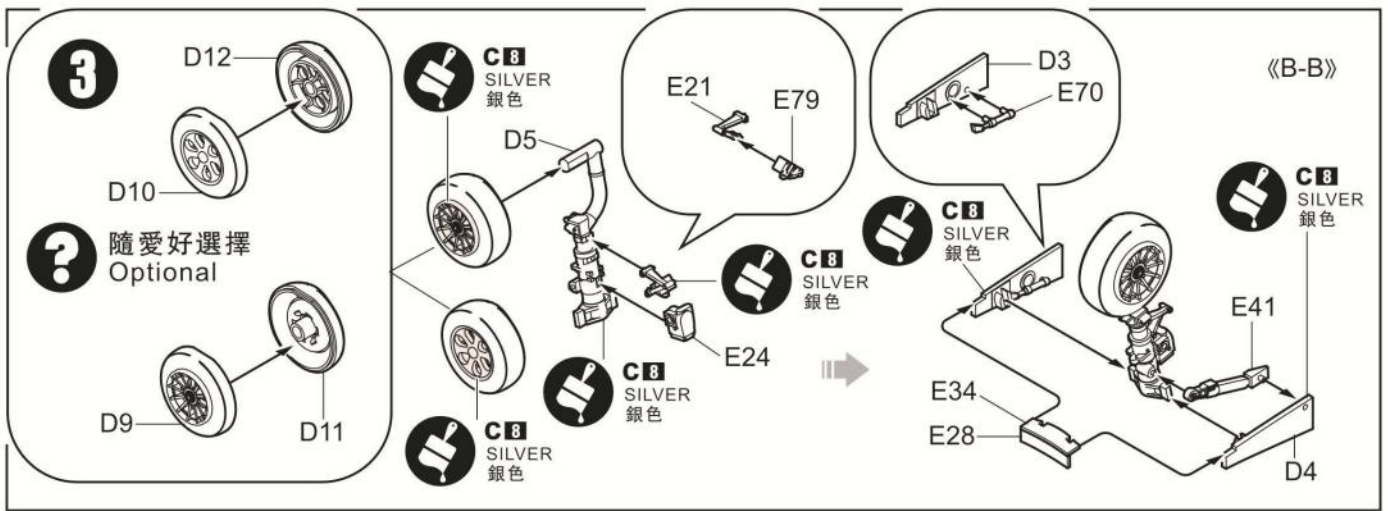


GP

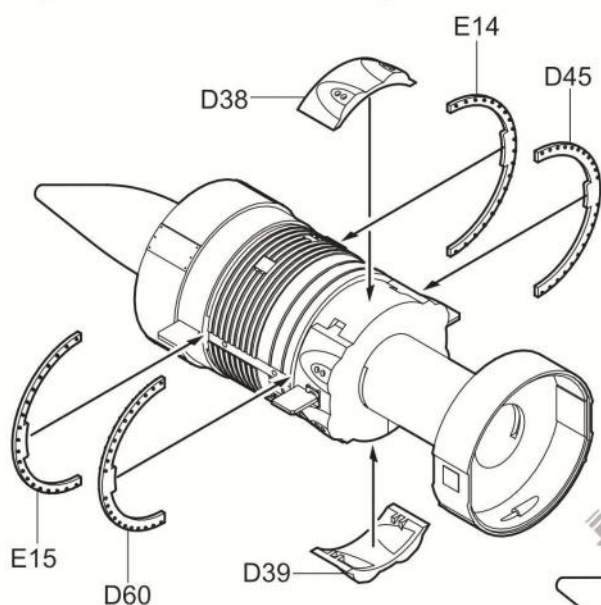
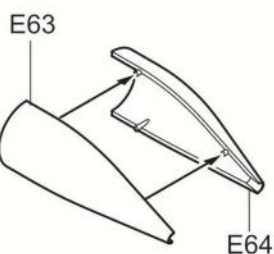
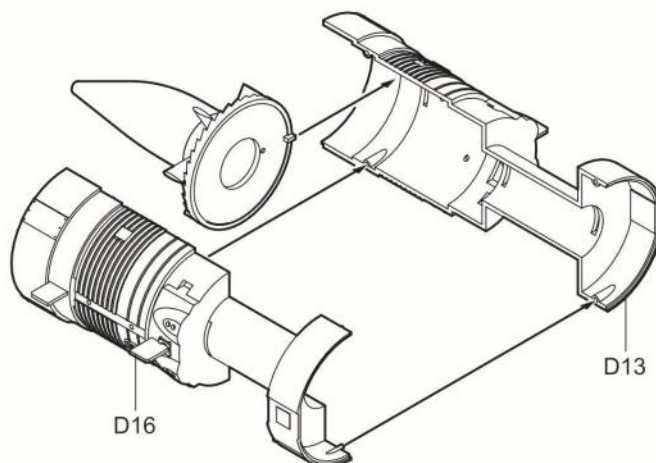
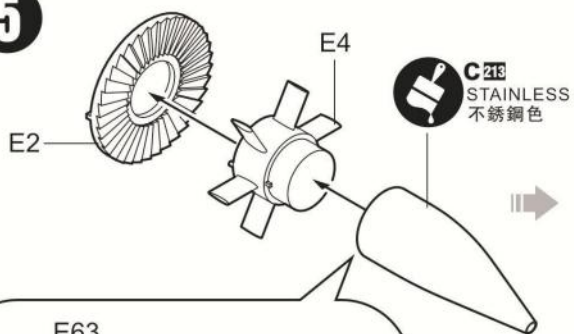


DECAL

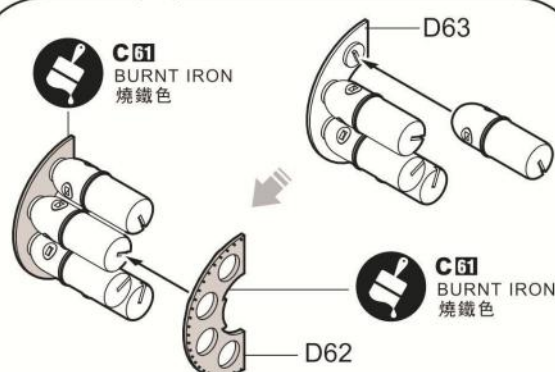
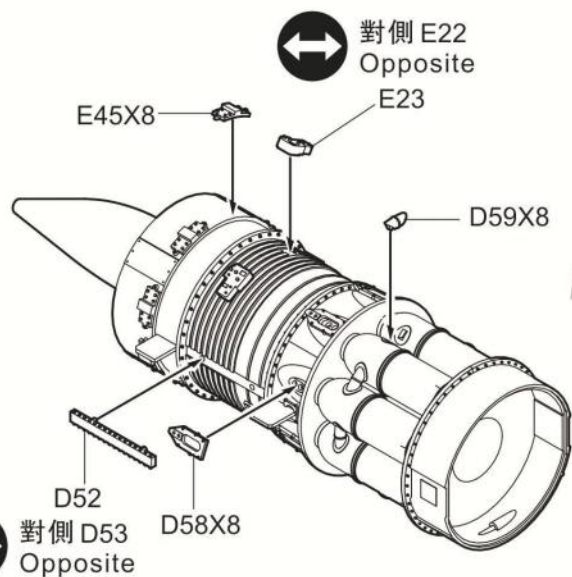
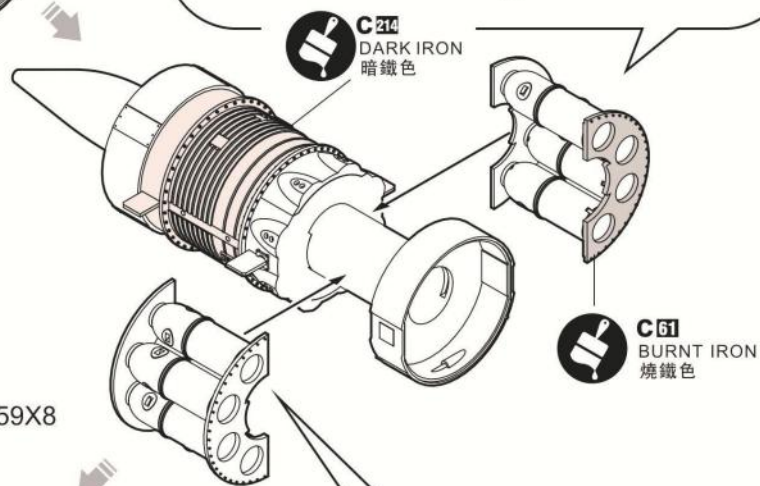
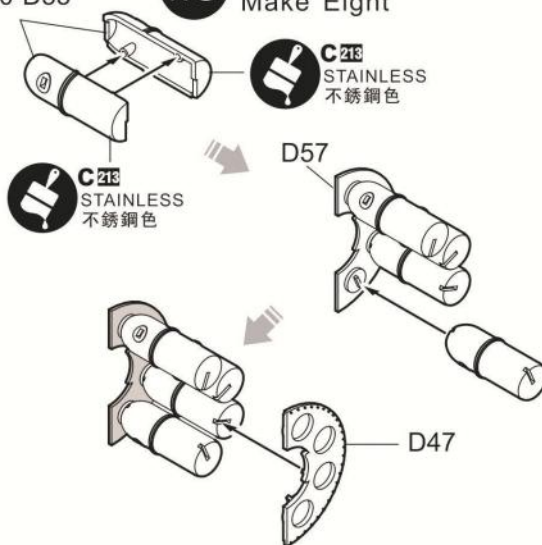




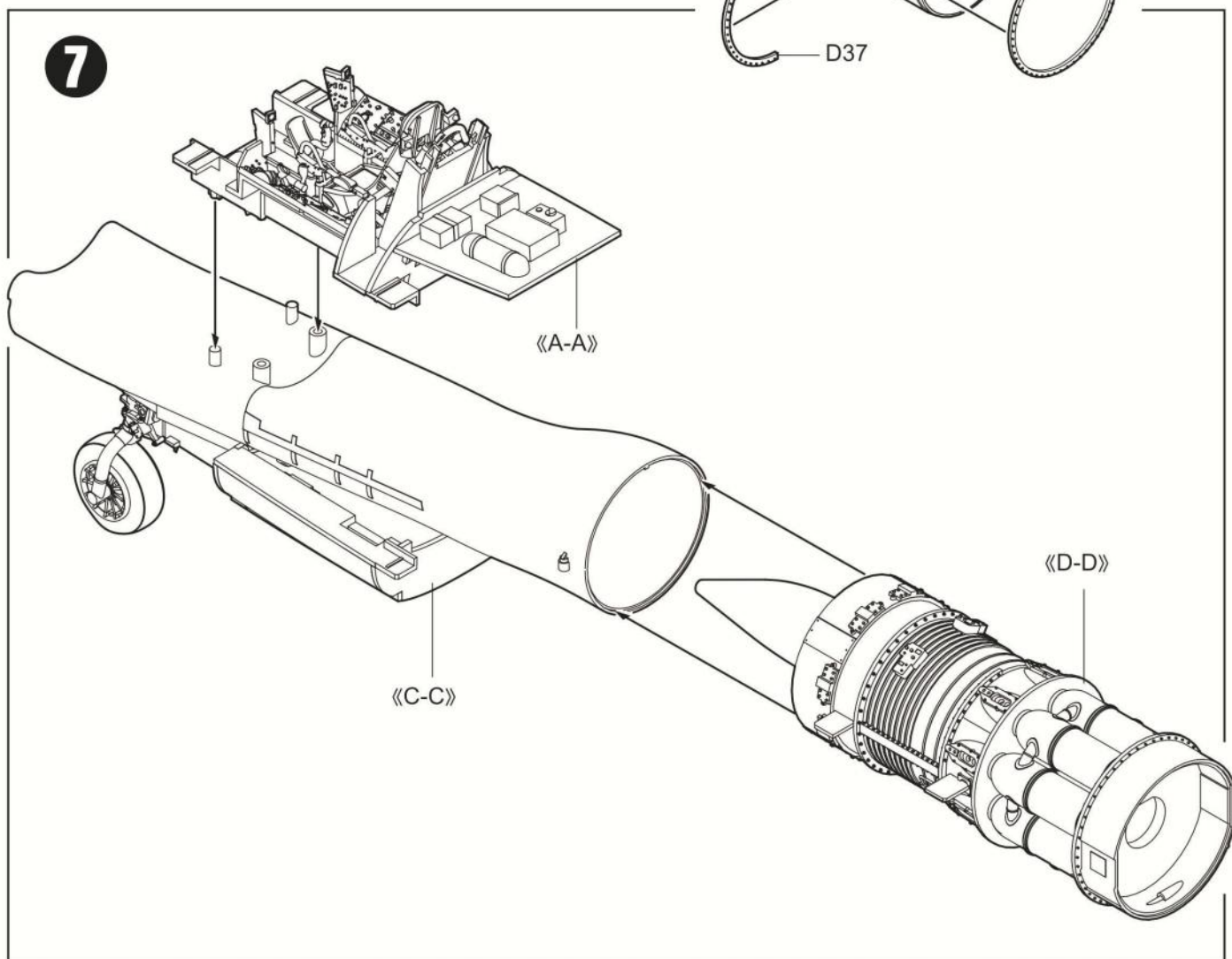
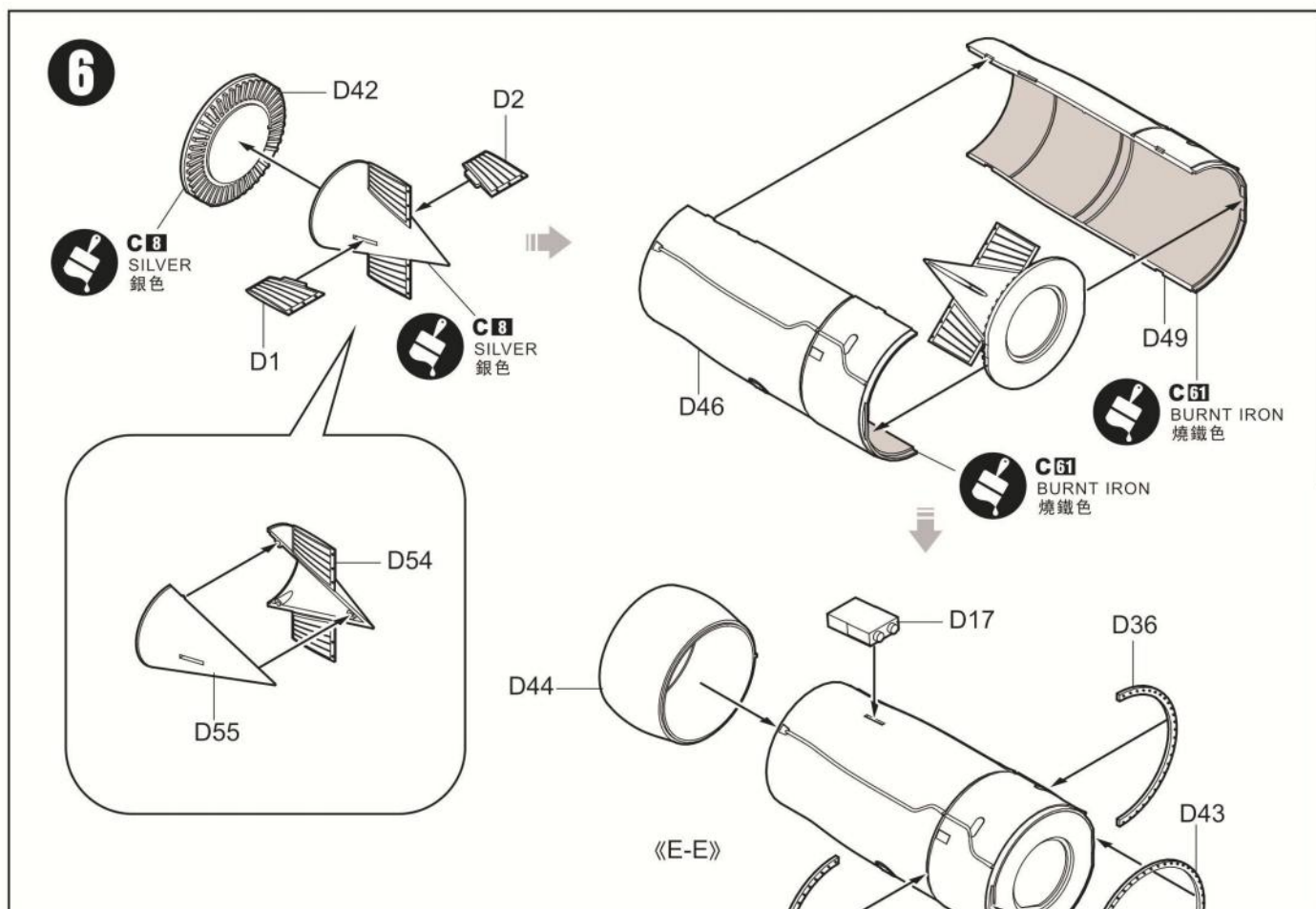
5



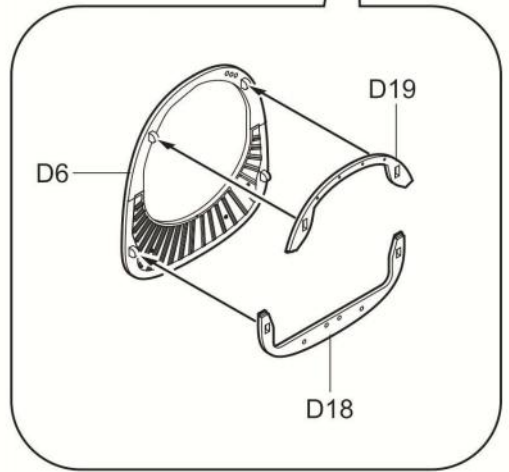
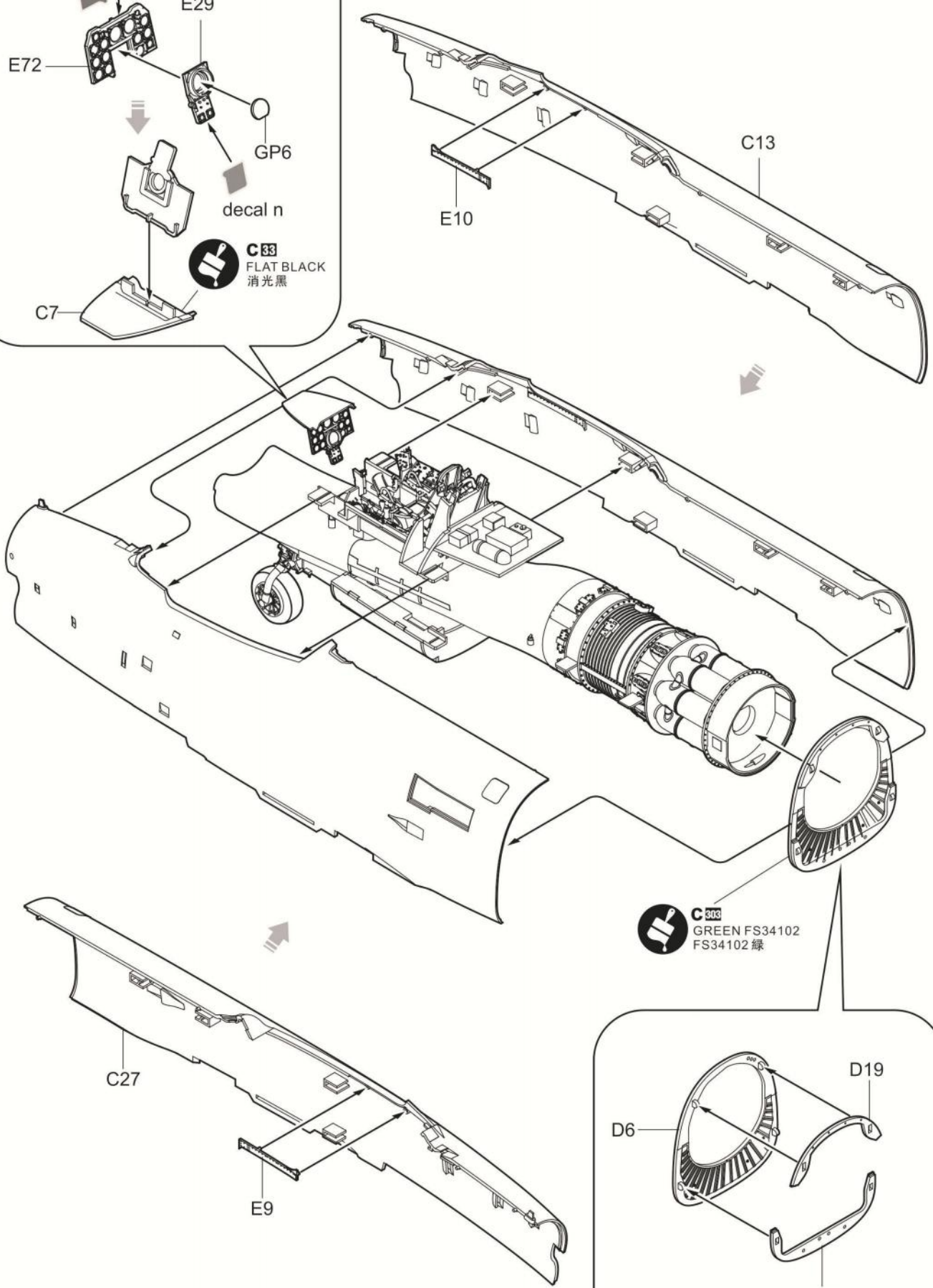
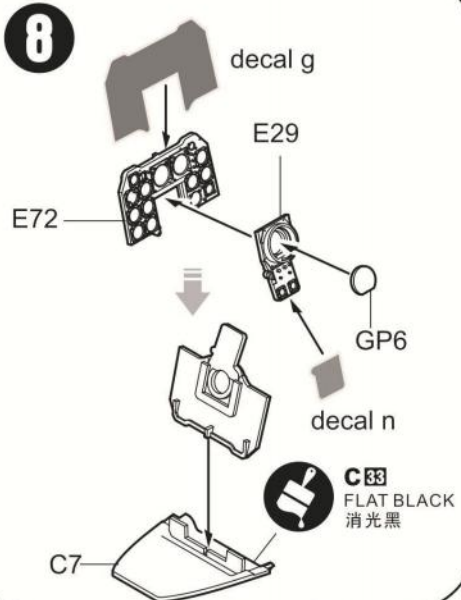
D20-D35 x8 制作八組
Make Eight



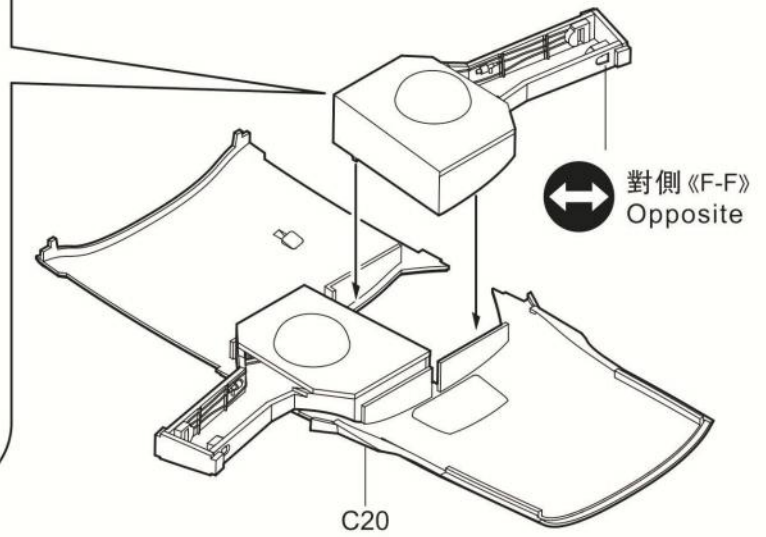
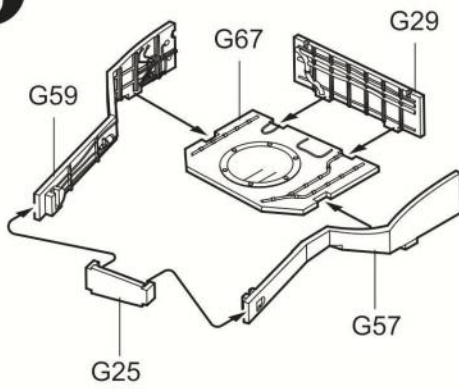
《D-D》



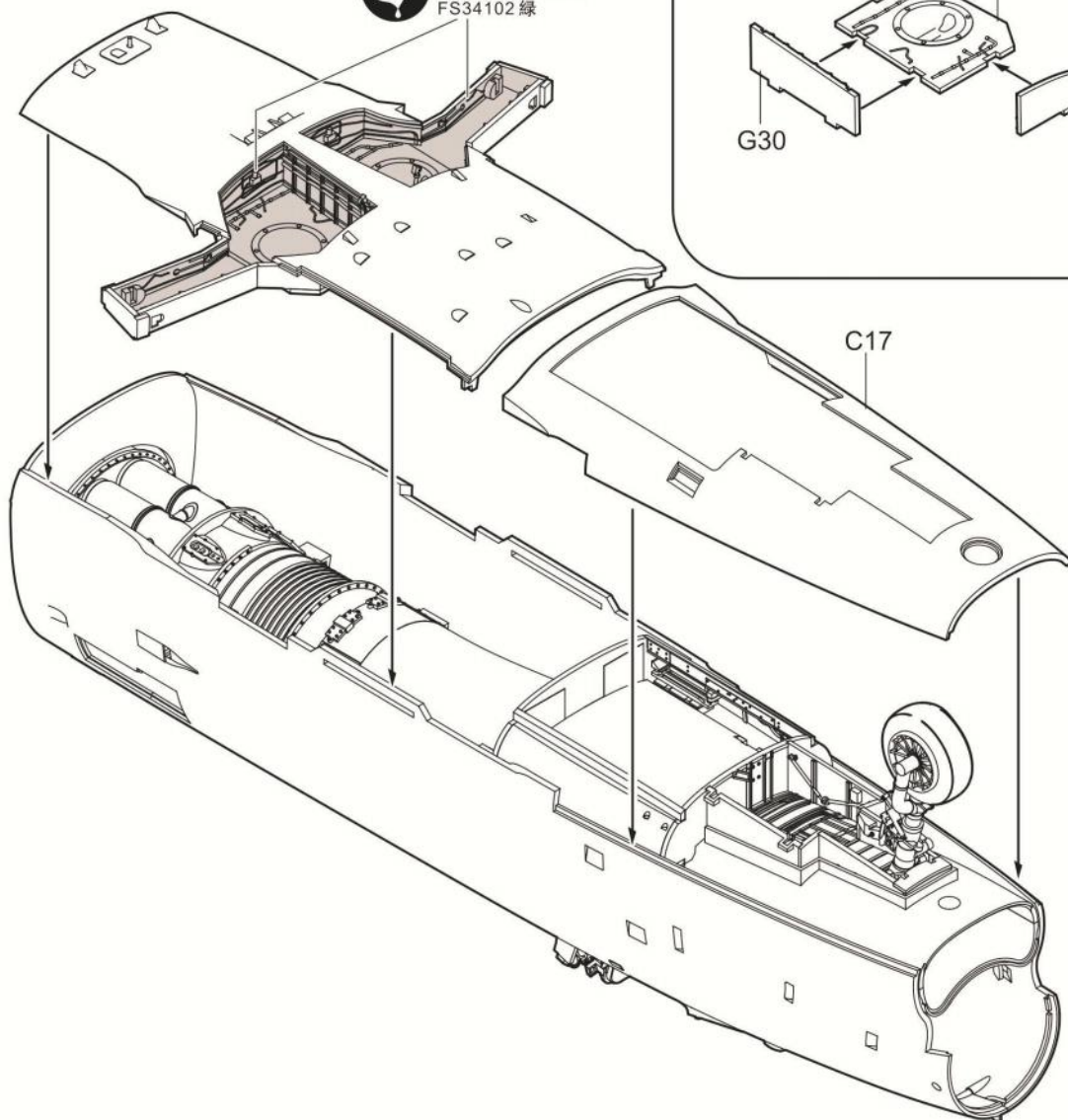
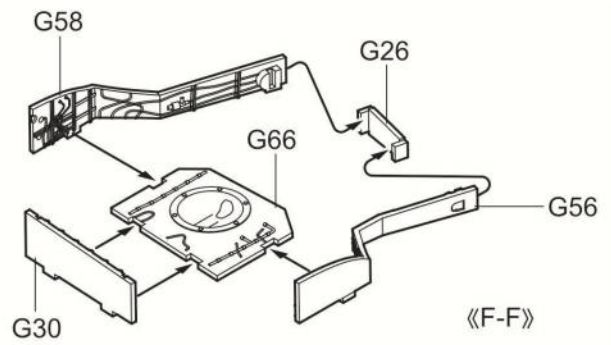
8

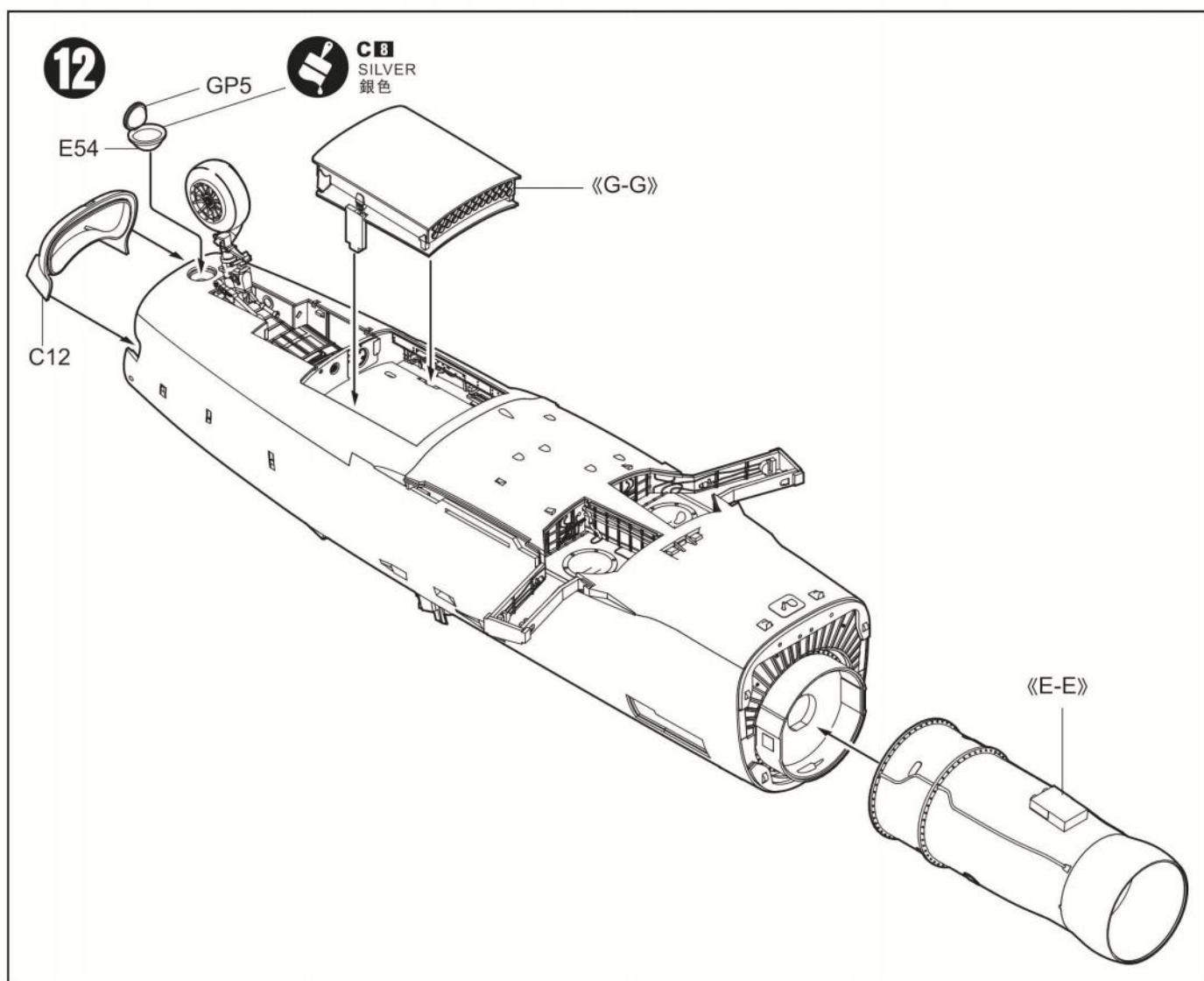
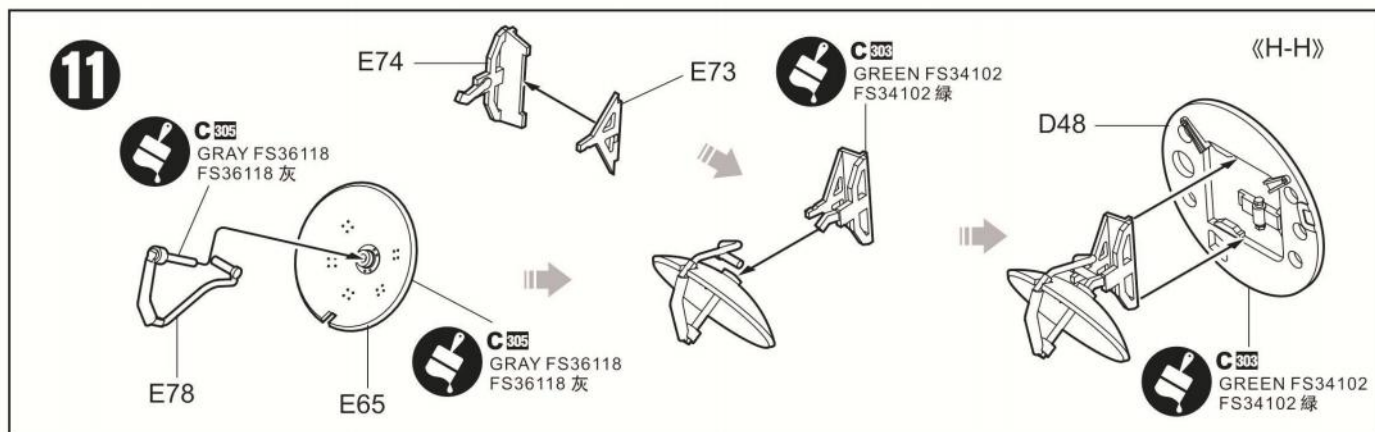
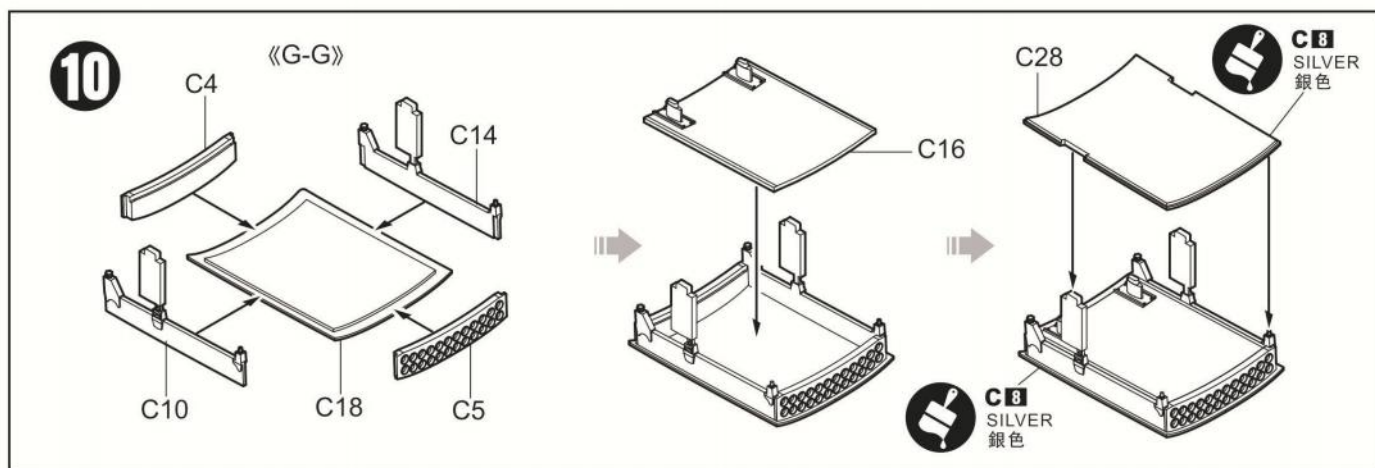


9

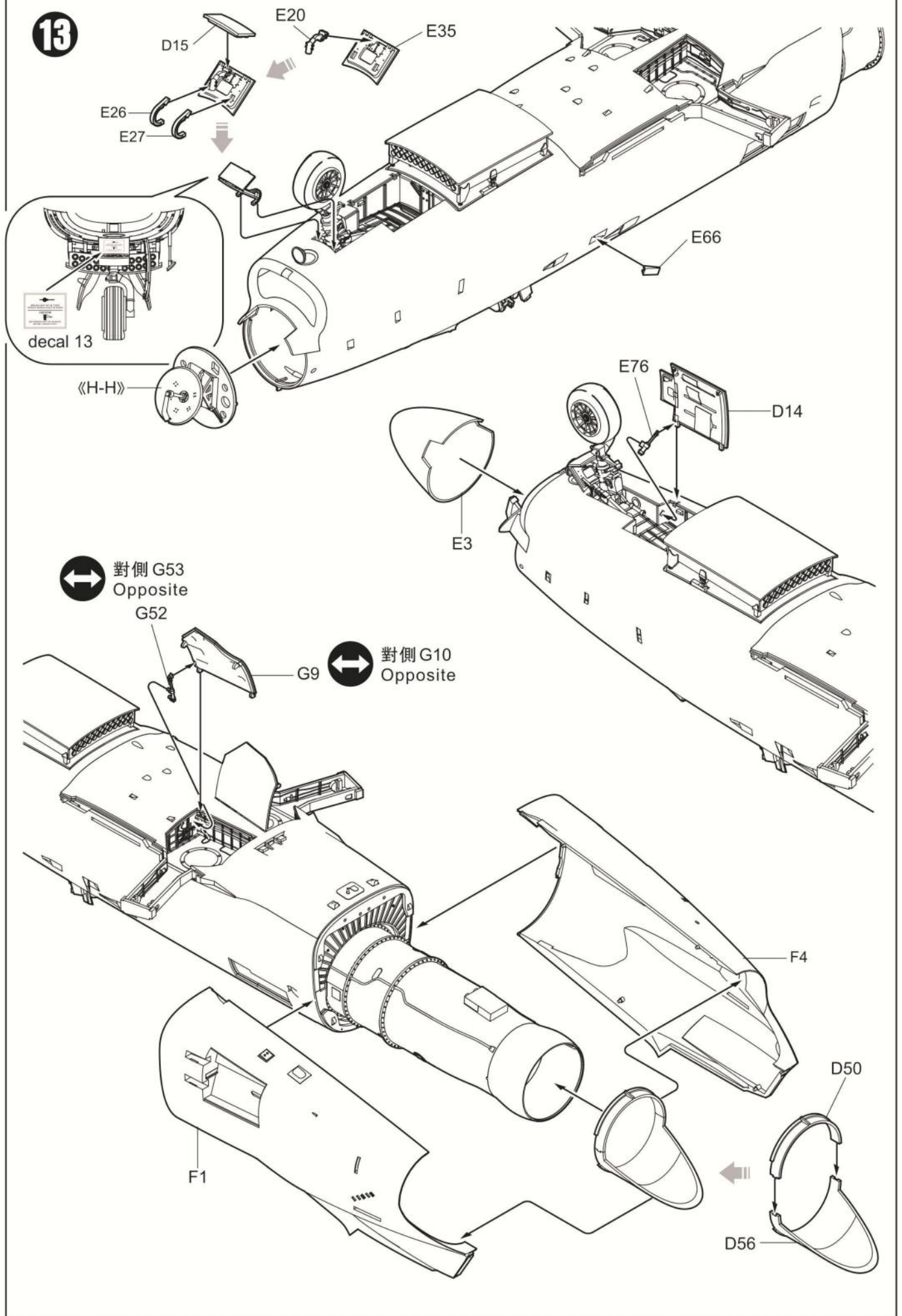


C303
GREEN FS34102
FS34102 綠

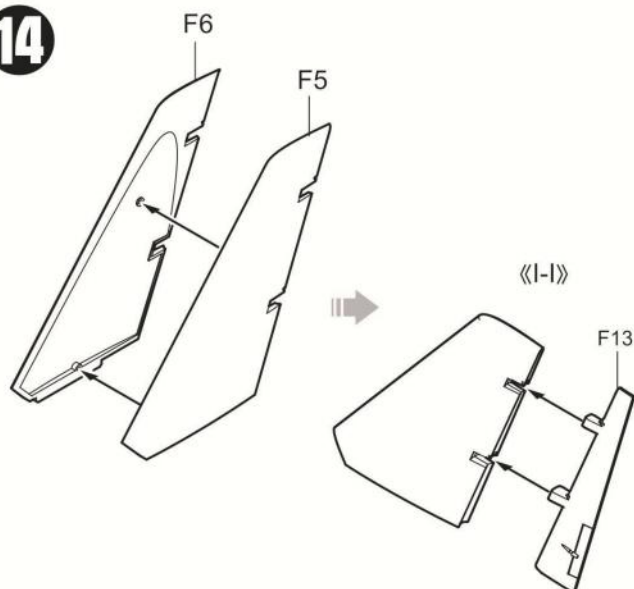




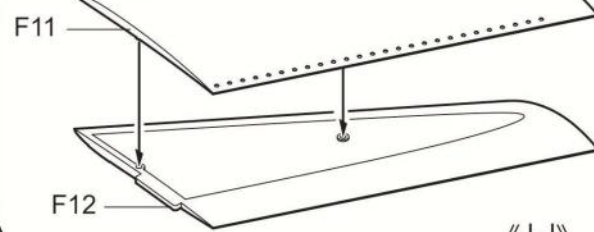
13



14

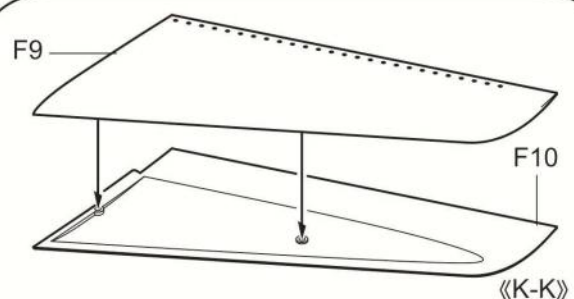


F11



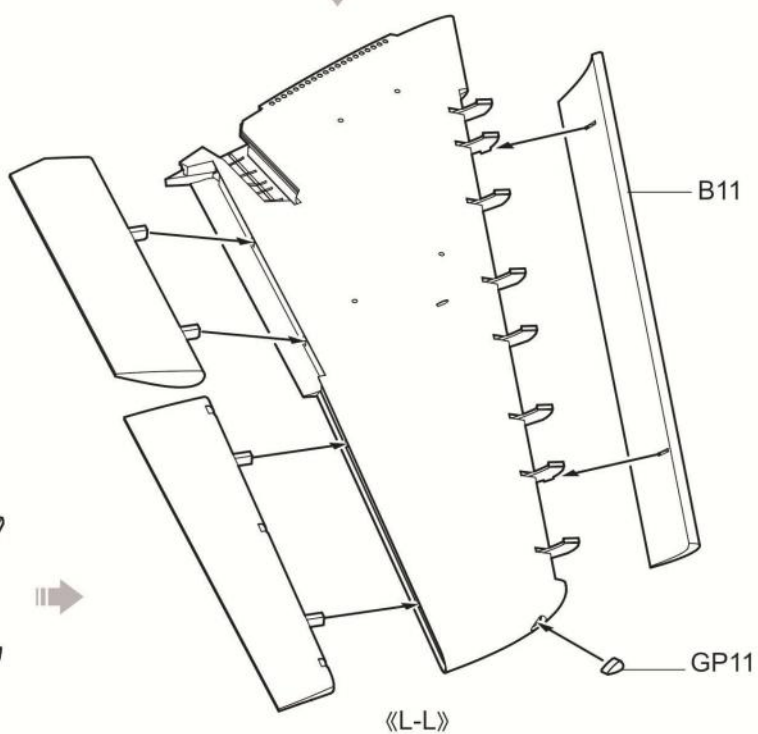
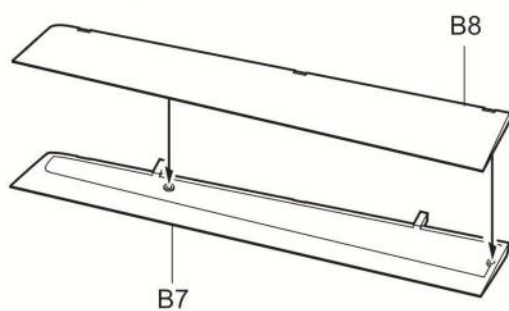
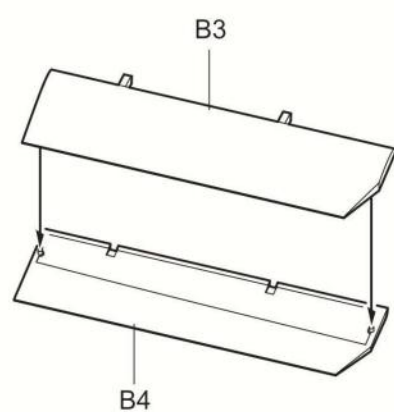
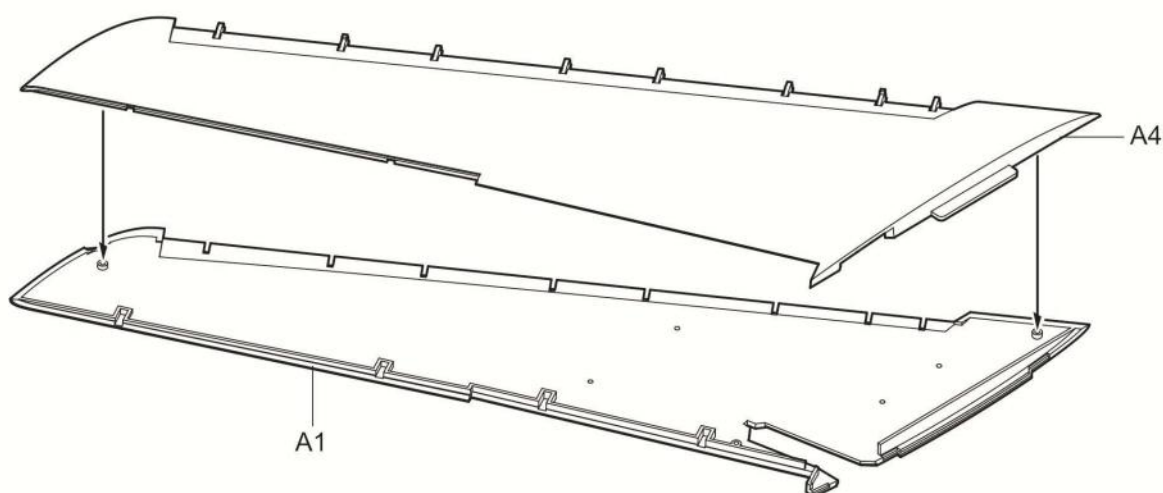
<J-J>

F9



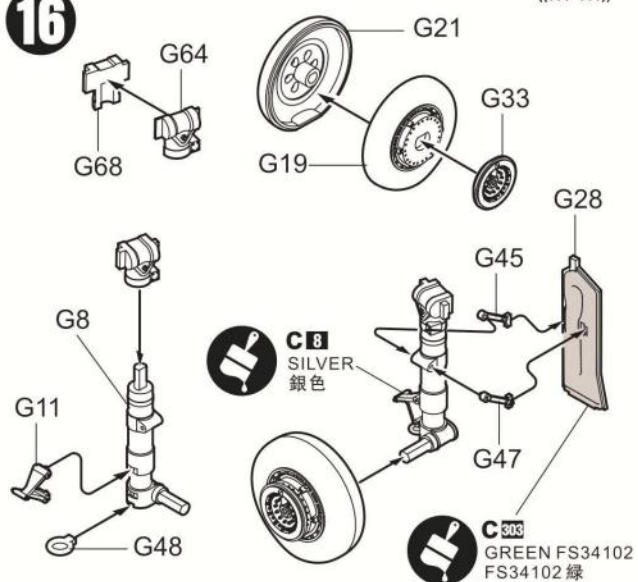
<K-K>

15

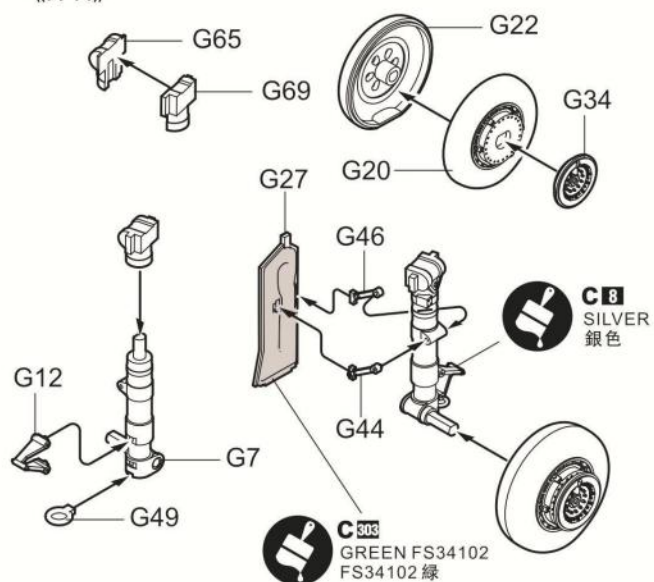


16

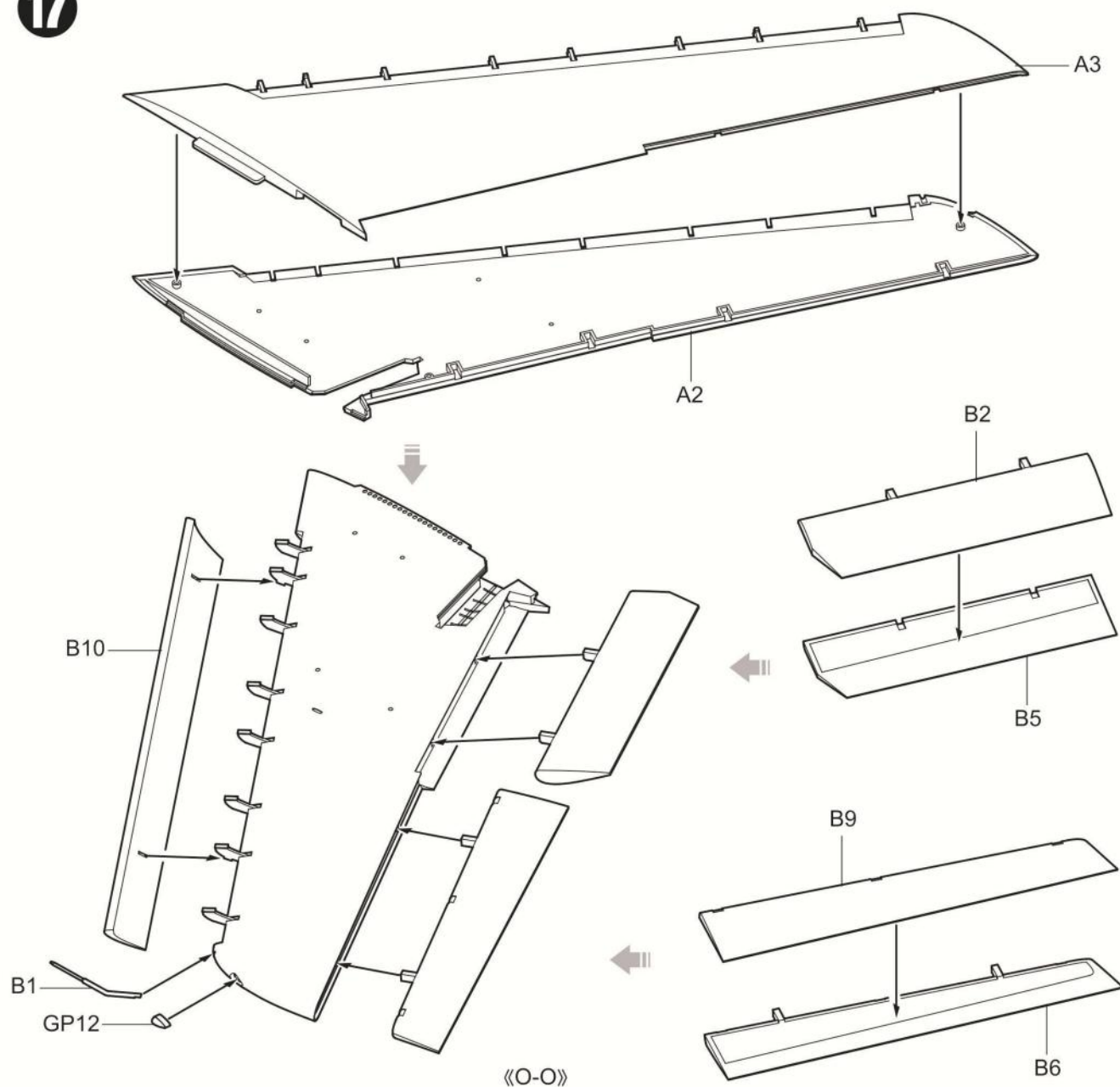
《M-M》



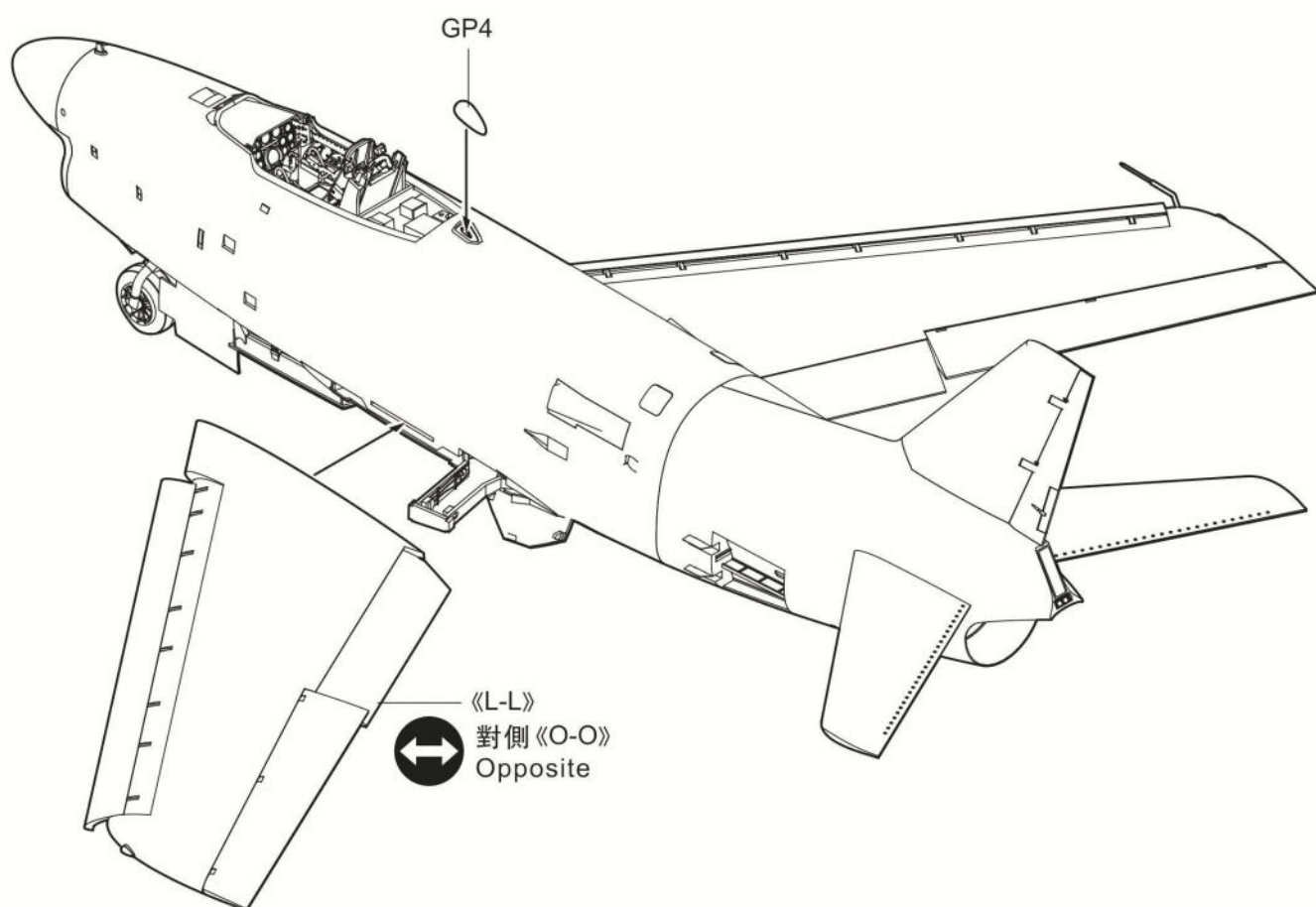
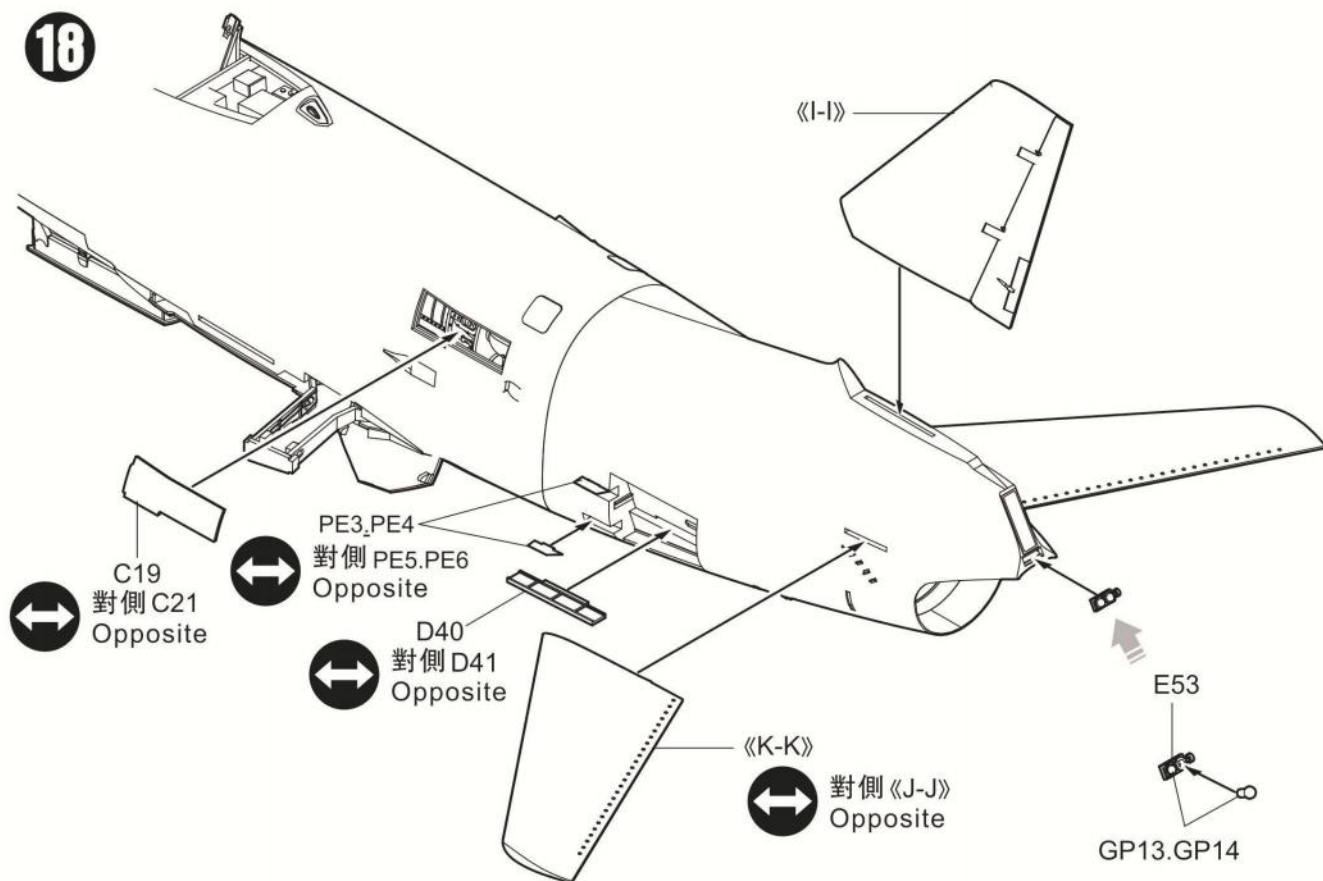
《N-N》



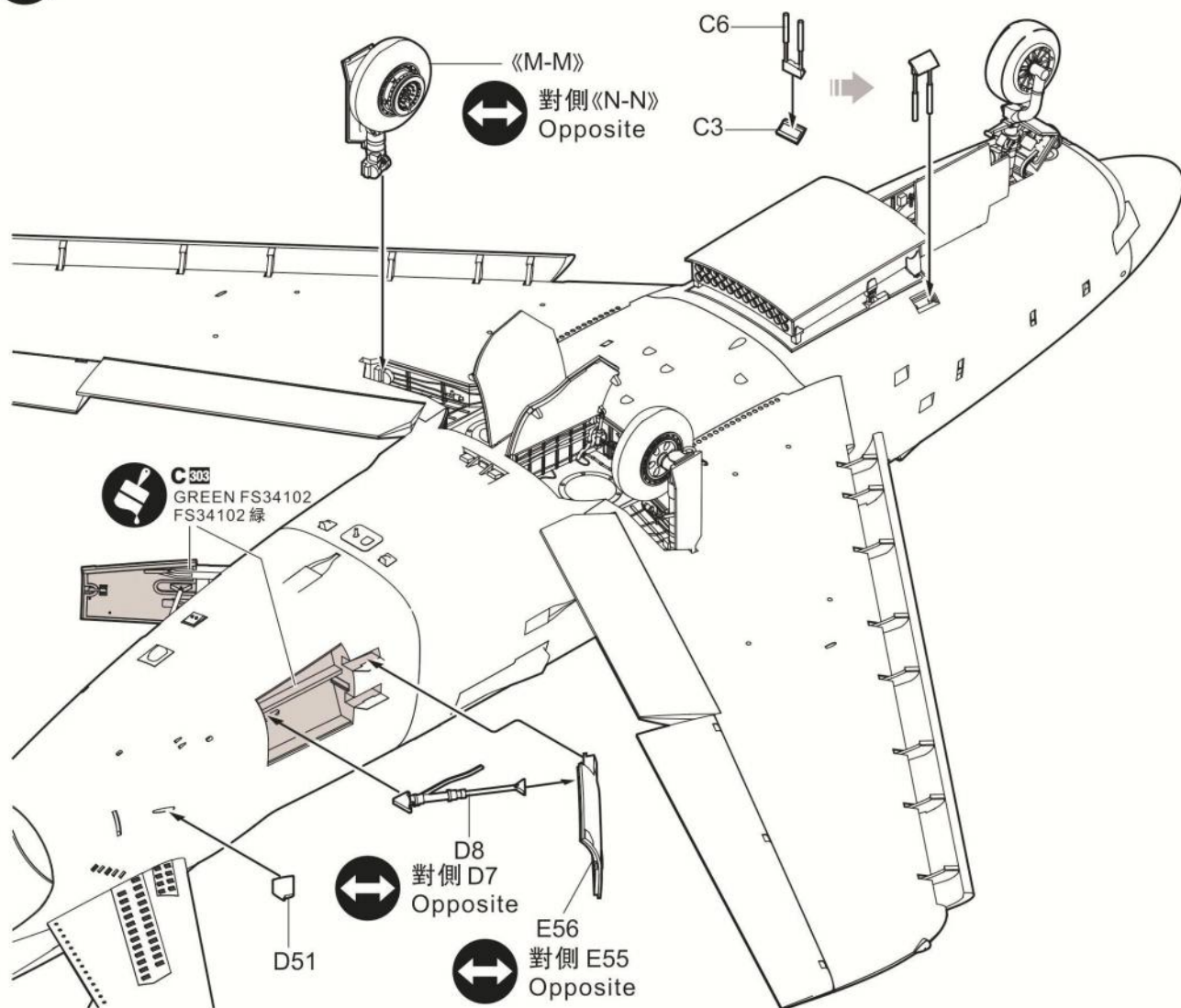
17



18



19



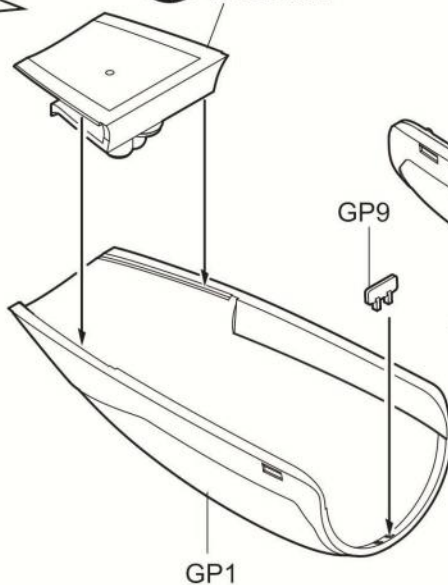
20

C49
CLEAR ORANGE
透明橙

GP10



C37
GRAY FS36231
FS36231 灰色



對側 E7
Opposite

E8

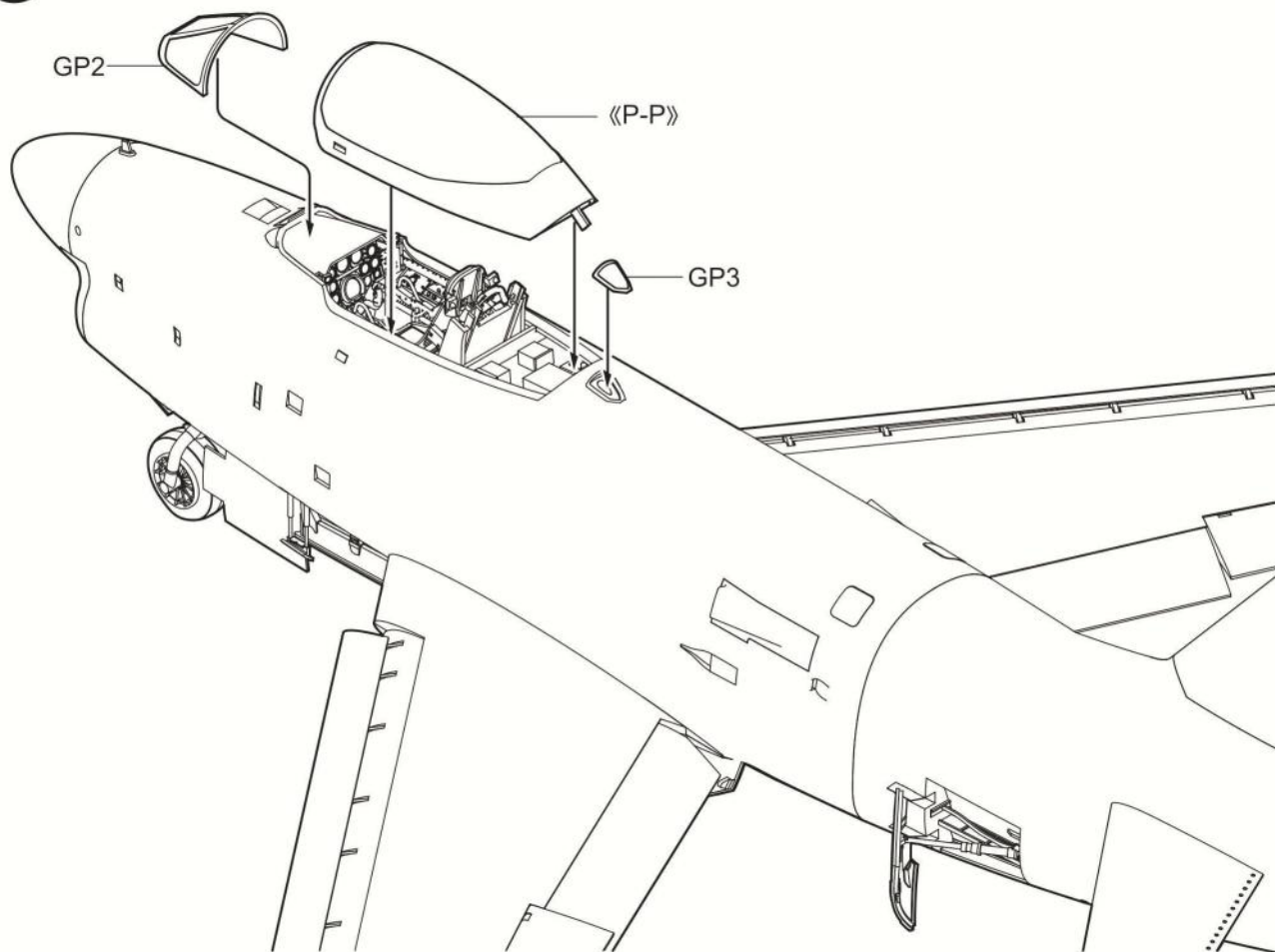
C37
GRAY FS36231
FS36231 灰色



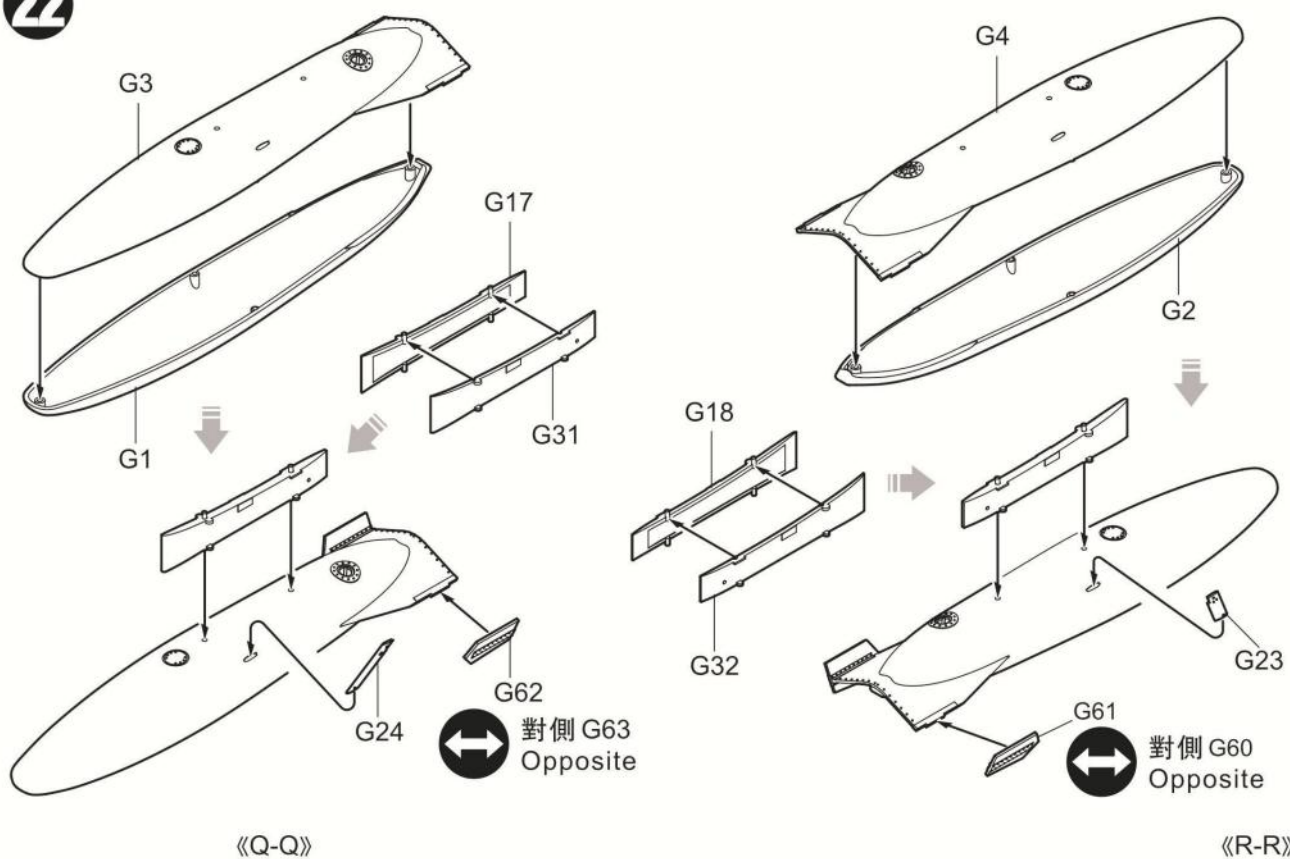
C37
GRAY FS36231
FS36231 灰色

《P-P》

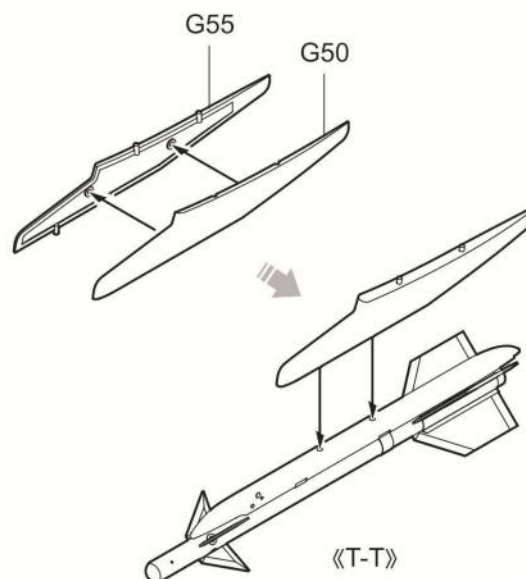
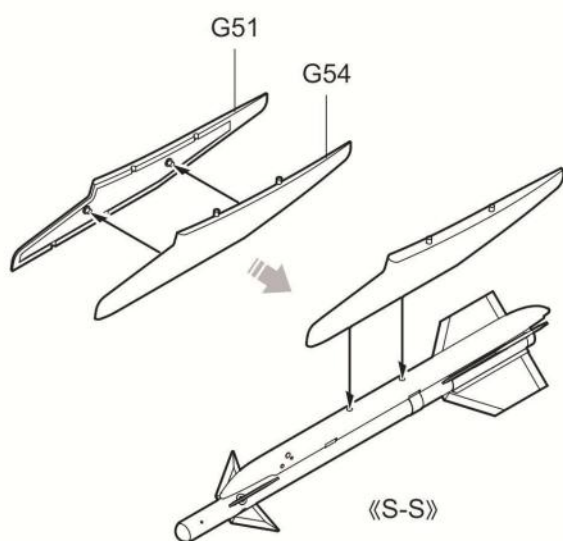
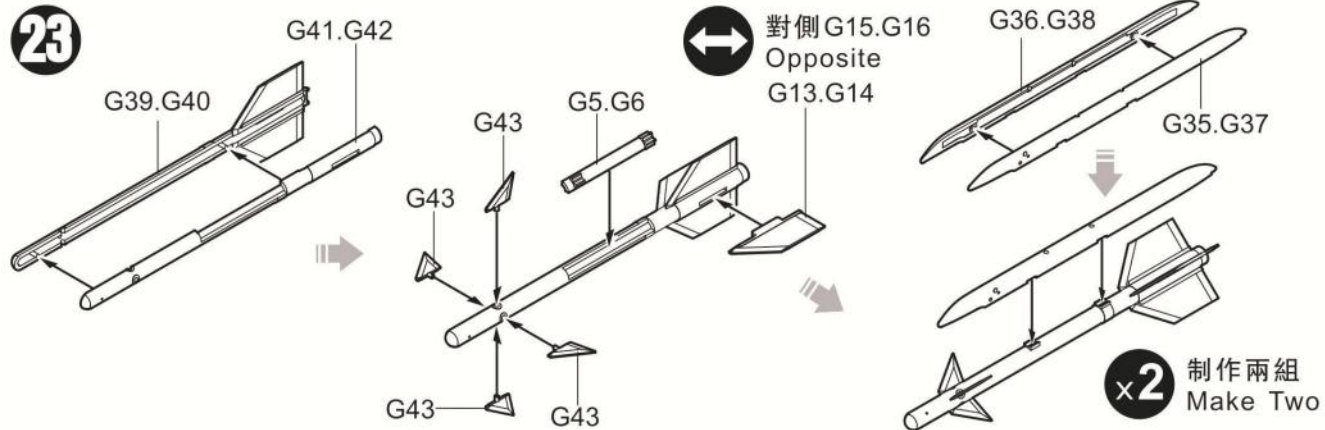
21



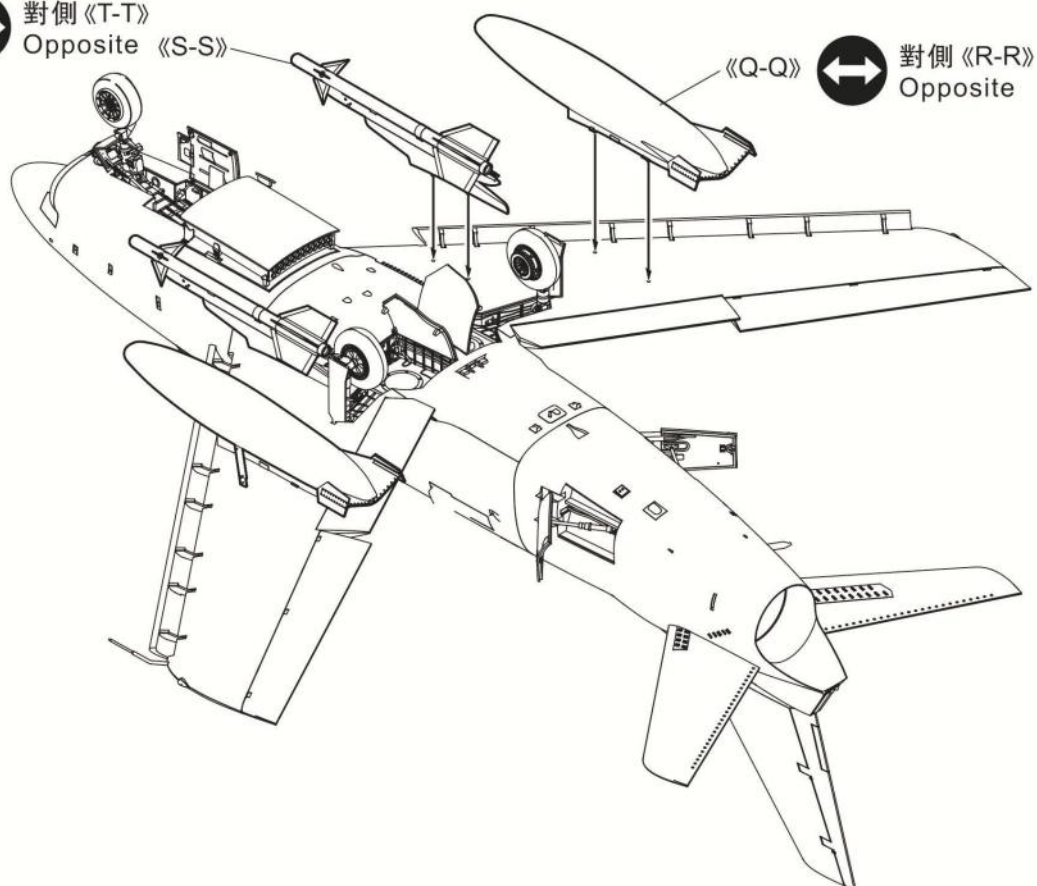
22



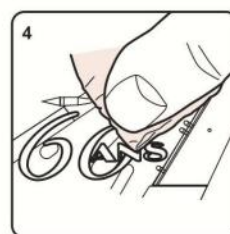
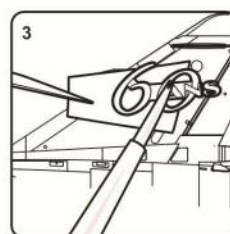
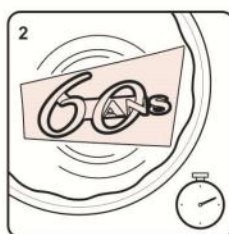
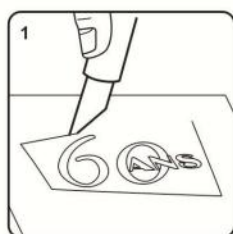
23



對側《T-T》
Opposite 《S-S》



DECAL APPLICATION

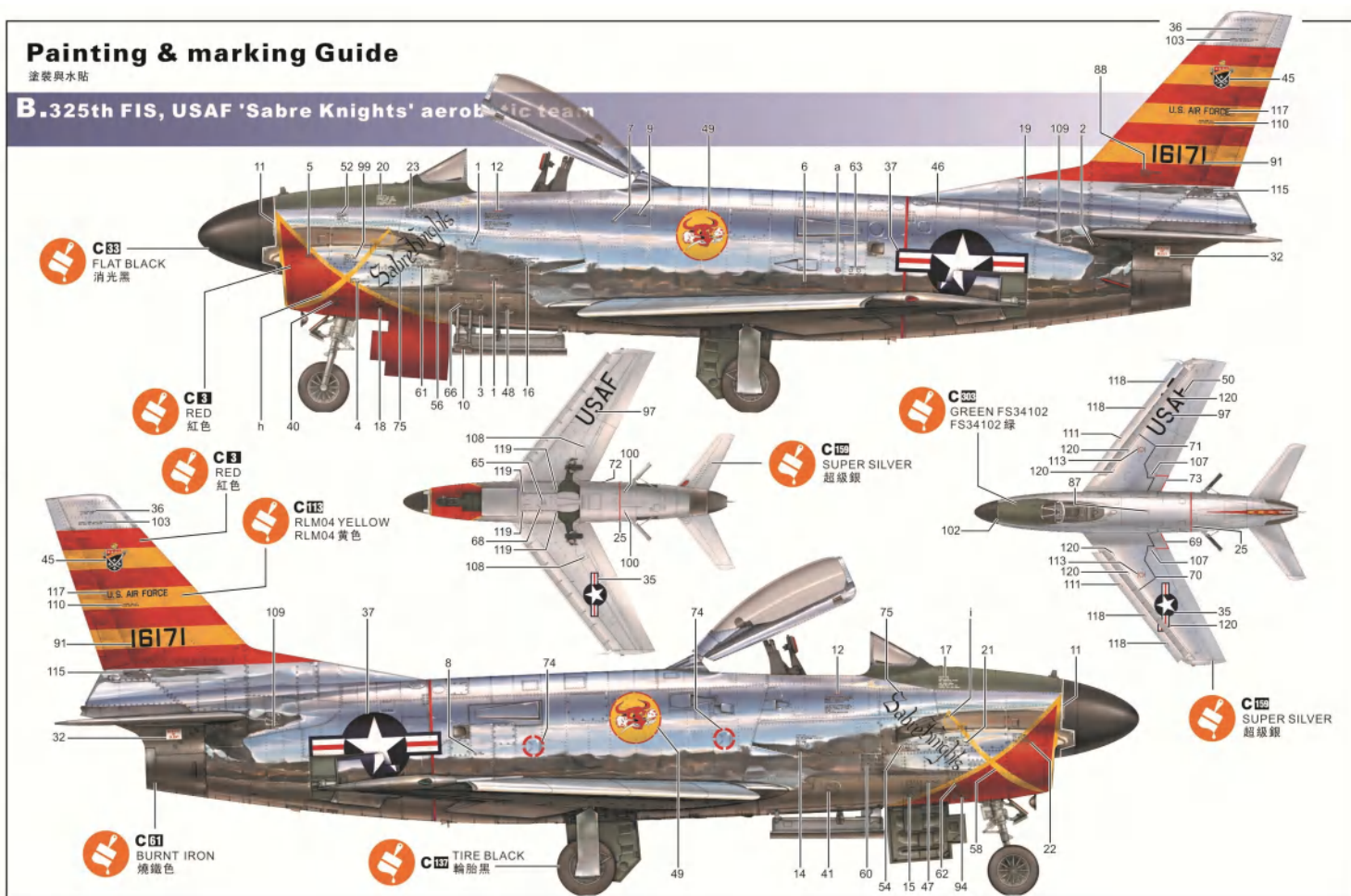


1. Cut off decal from transfer sheet.
2. Dip the decal in water for about 10 seconds (may take more seconds if in low temperature), and place on a clean cloth.
3. Hold the backing paper edge and slide decal onto the model. Then move decal into position by wetting decal with brush or finger.
4. Press decal gently down with a soft cloth until excess water and air bubbles are gone.

Painting & marking Guide

塗裝與水貼

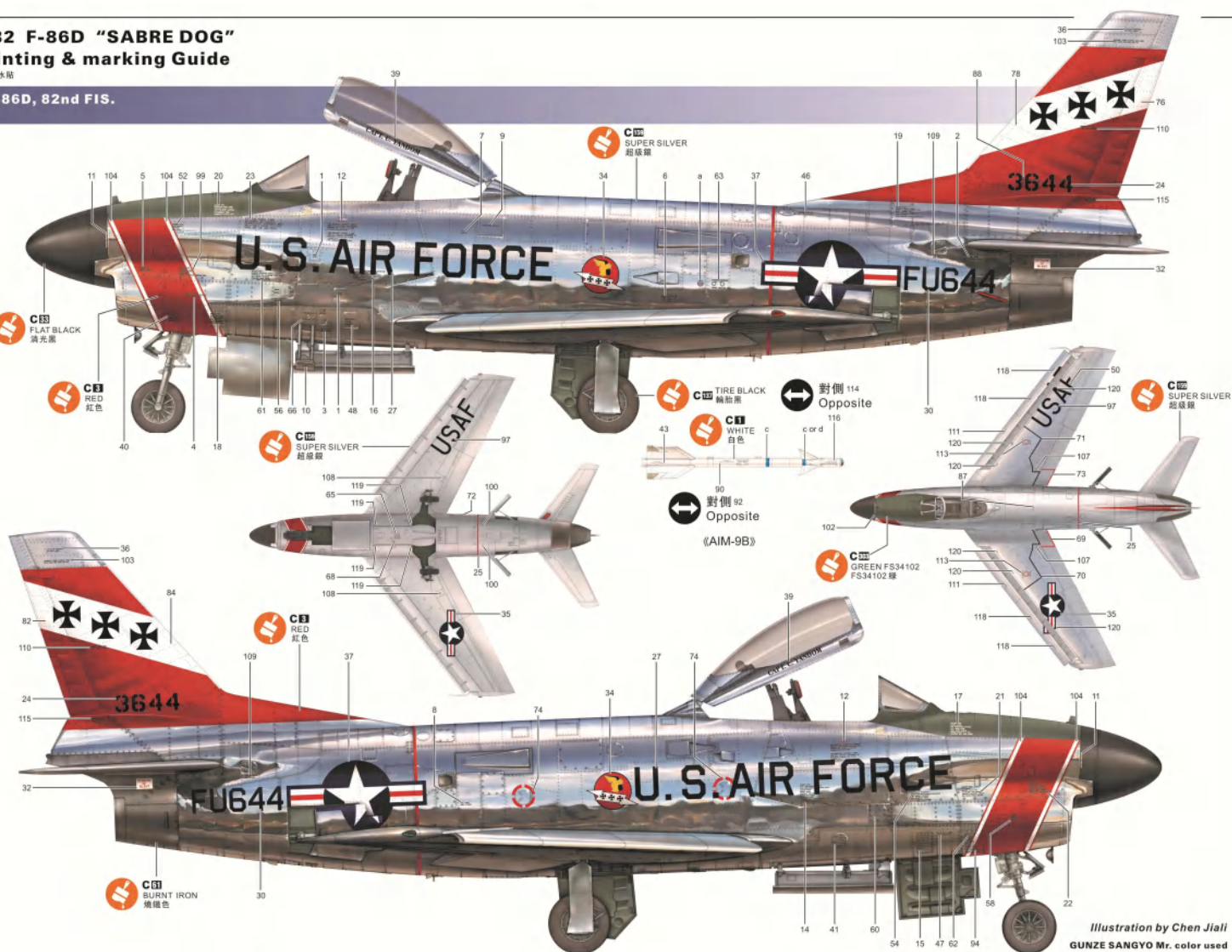
B.325th FIS, USAF 'Sabre Knights' aerobatic team



1:32 F-86D "SABRE DOG"

Painting & marking Guide

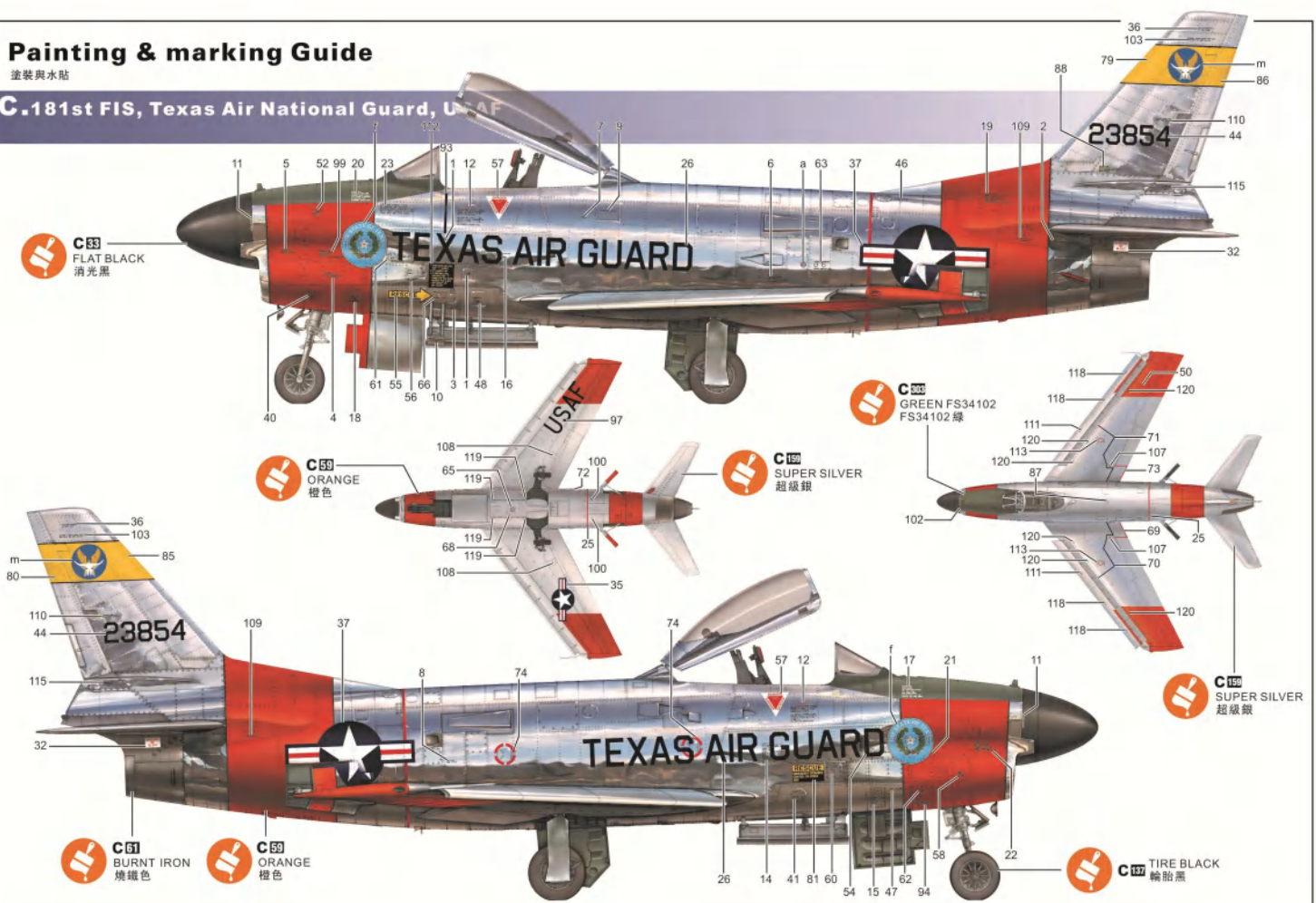
A.F-86D, 82nd FIS.



Painting & marking Guide

塗裝與水貼

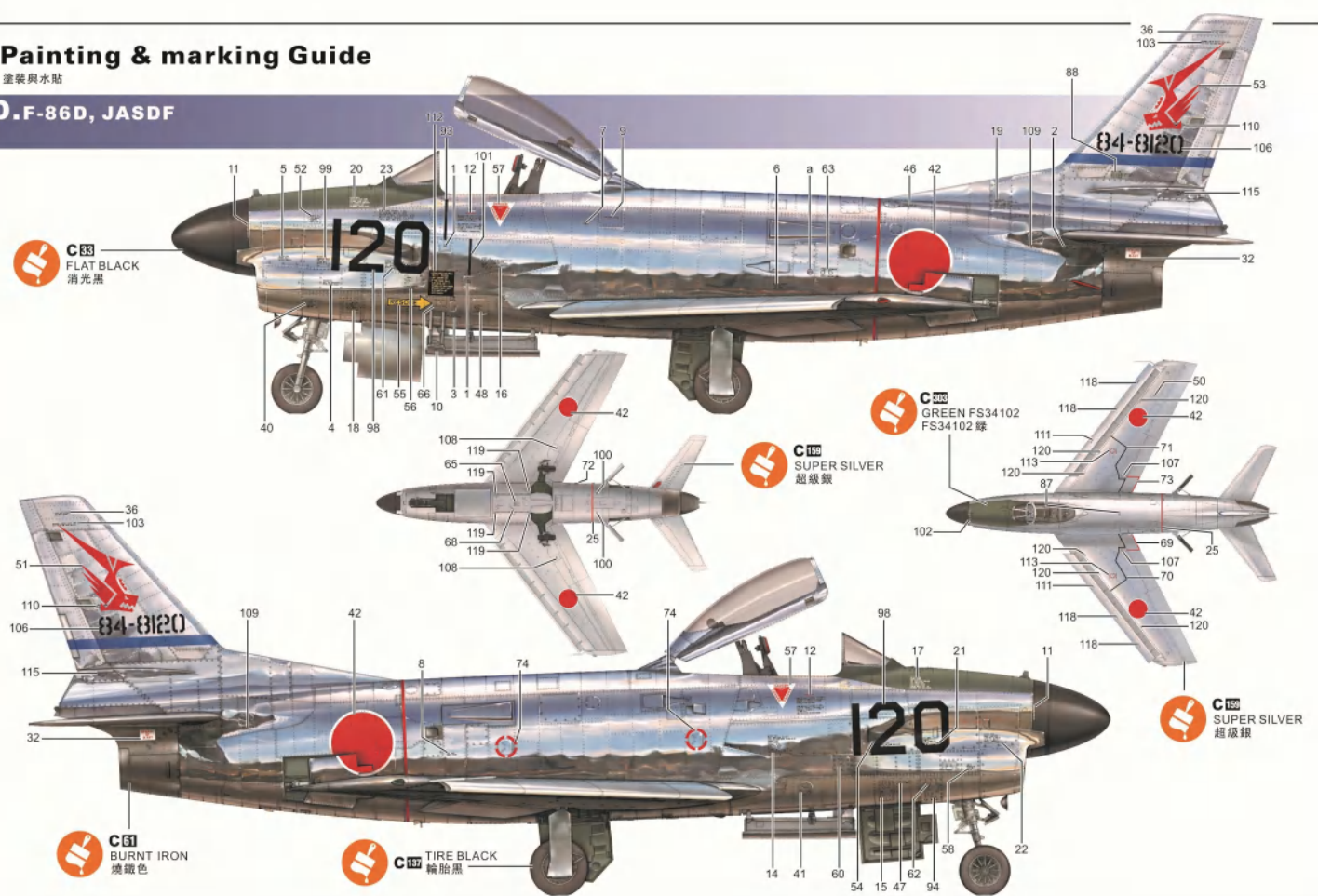
C-181st FIS, Texas Air National Guard, USAF



Painting & marking Guide

塗裝與水貼

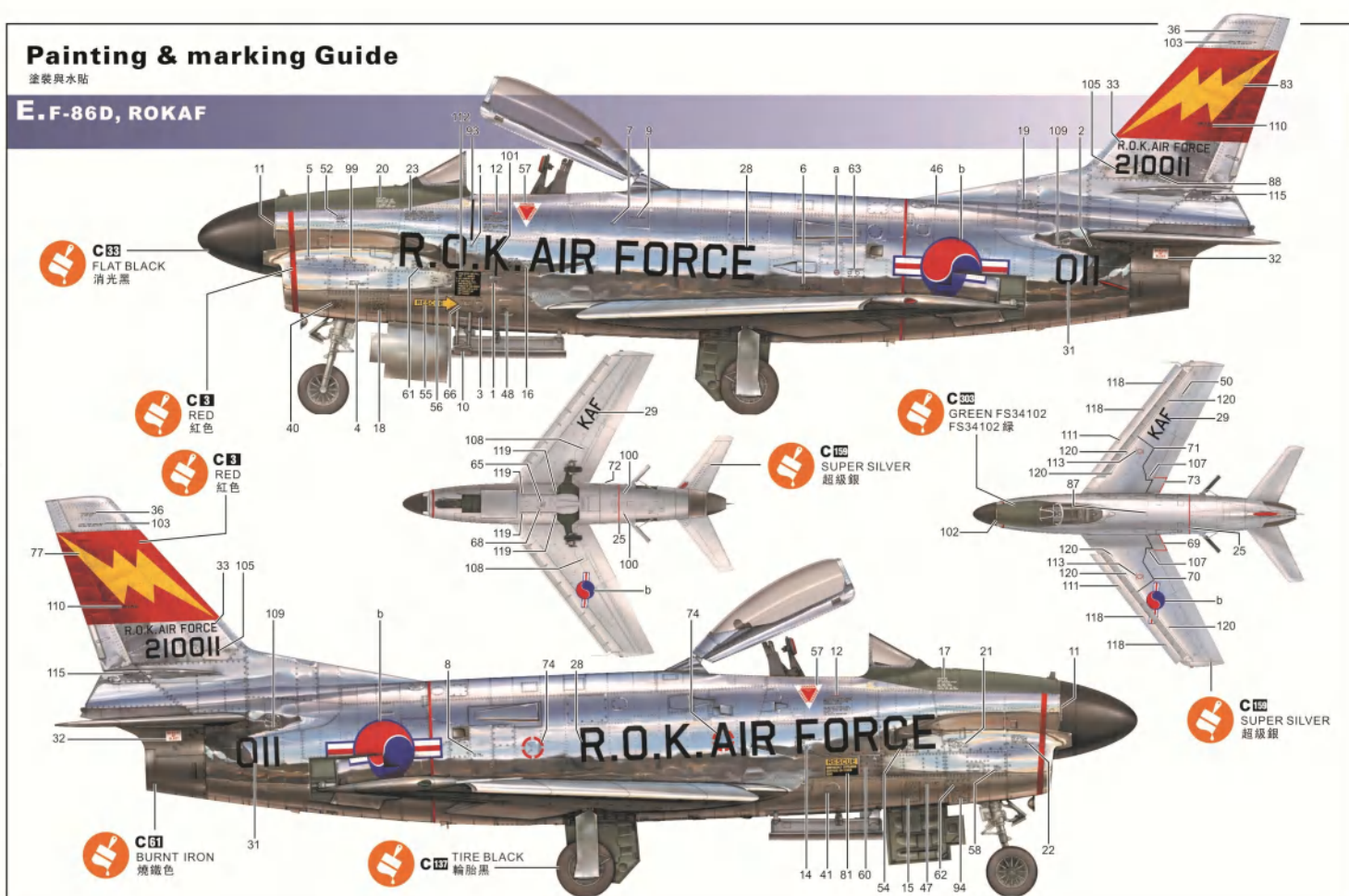
D.F-86D, JASDF



Painting & marking Guide

塗裝與水貼

E.F-86D, ROKAF



Painting & marking Guide

塗裝與水貼

F. F-86D, ROCAF

