

1:48



SA.365F/AS.565SA Dauphin II

1:48 SA.365F/AS.565SA海豚直升机



Instruction

ITEM NO. ZM80108

READ BEFORE ASSEMBLY

在組合您的模型之前，請充分閱讀本冊說明書。組合模型您需要如下物品（需另購）：模型膠水；一把模型鉗或一把用于將零件從框架上切下的模型筆刀。筆刀同樣可以用來修整零件的合模縫。祝您制作愉快！

Before assembling your model kit, read through these instructions carefully. To assemble this kit, you will need Plastic glue (not include). A pair of side cutter or a sharp modelling knife is required for removing parts from the frame. Plastic mould lines can be removed with the modelling knife.



塗色
Painting



對側
Opposite



隨愛好選擇
Optional



鉗孔
Make Hole



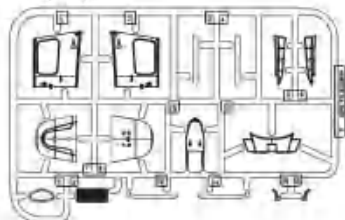
制作兩組
Make Two



配重
Weight

部品图 Parts

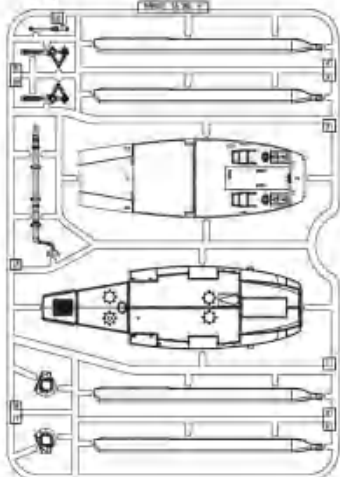
WA



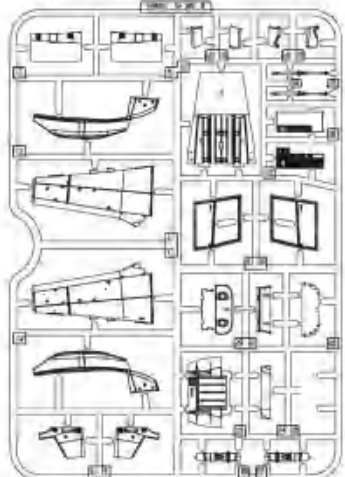
GP



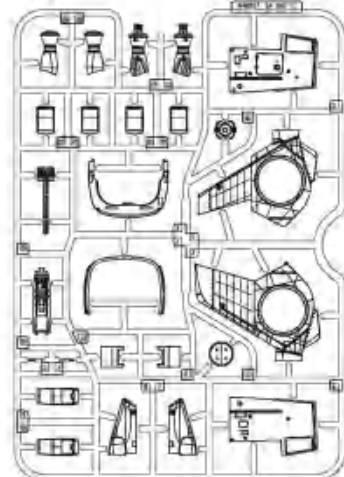
A



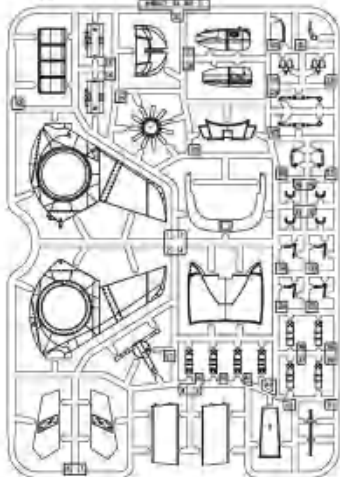
B



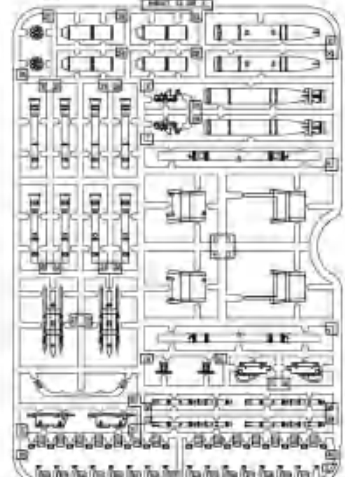
C



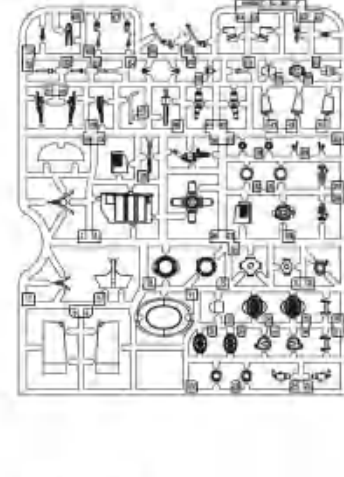
D



E



F



Decal A 水贴纸A

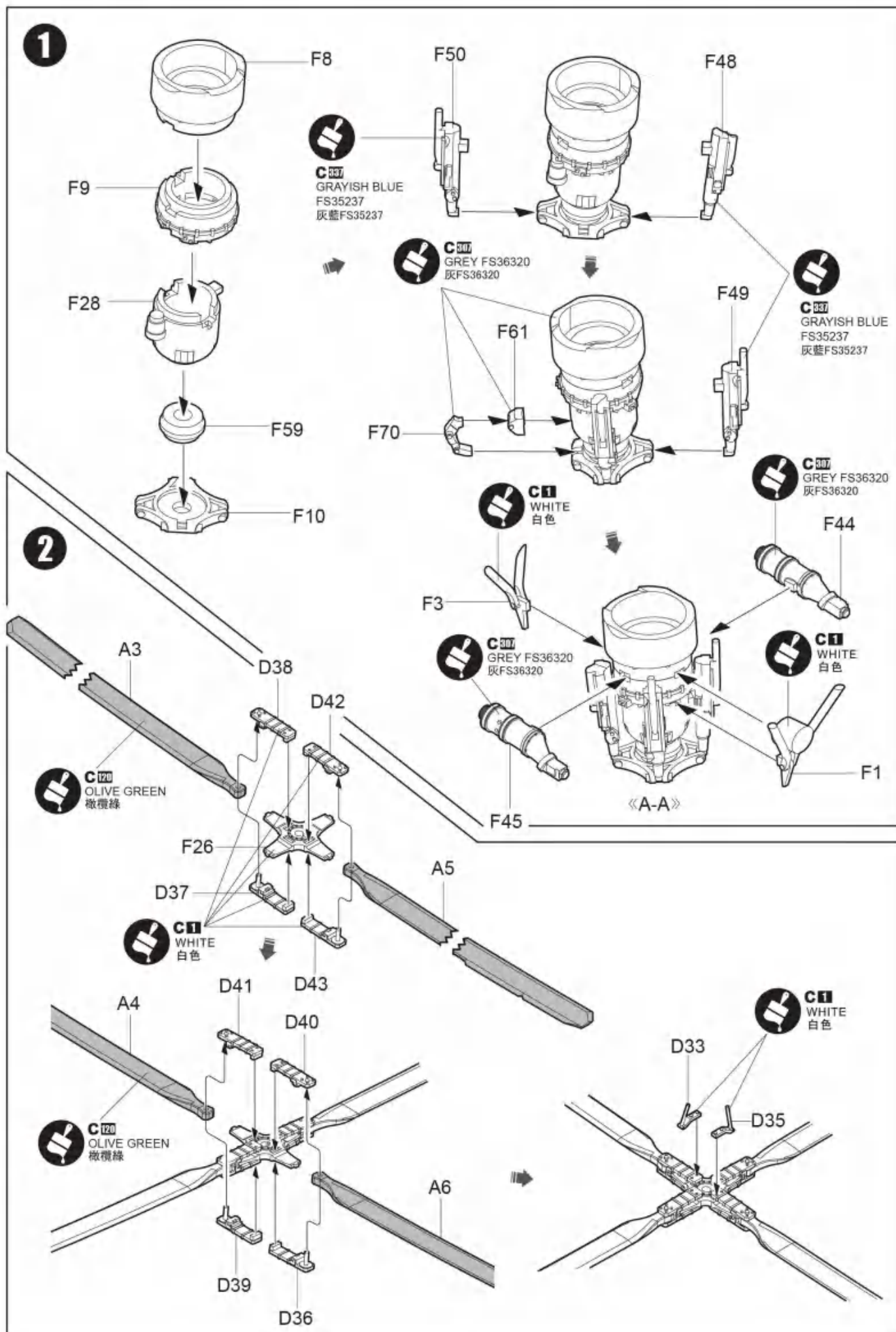


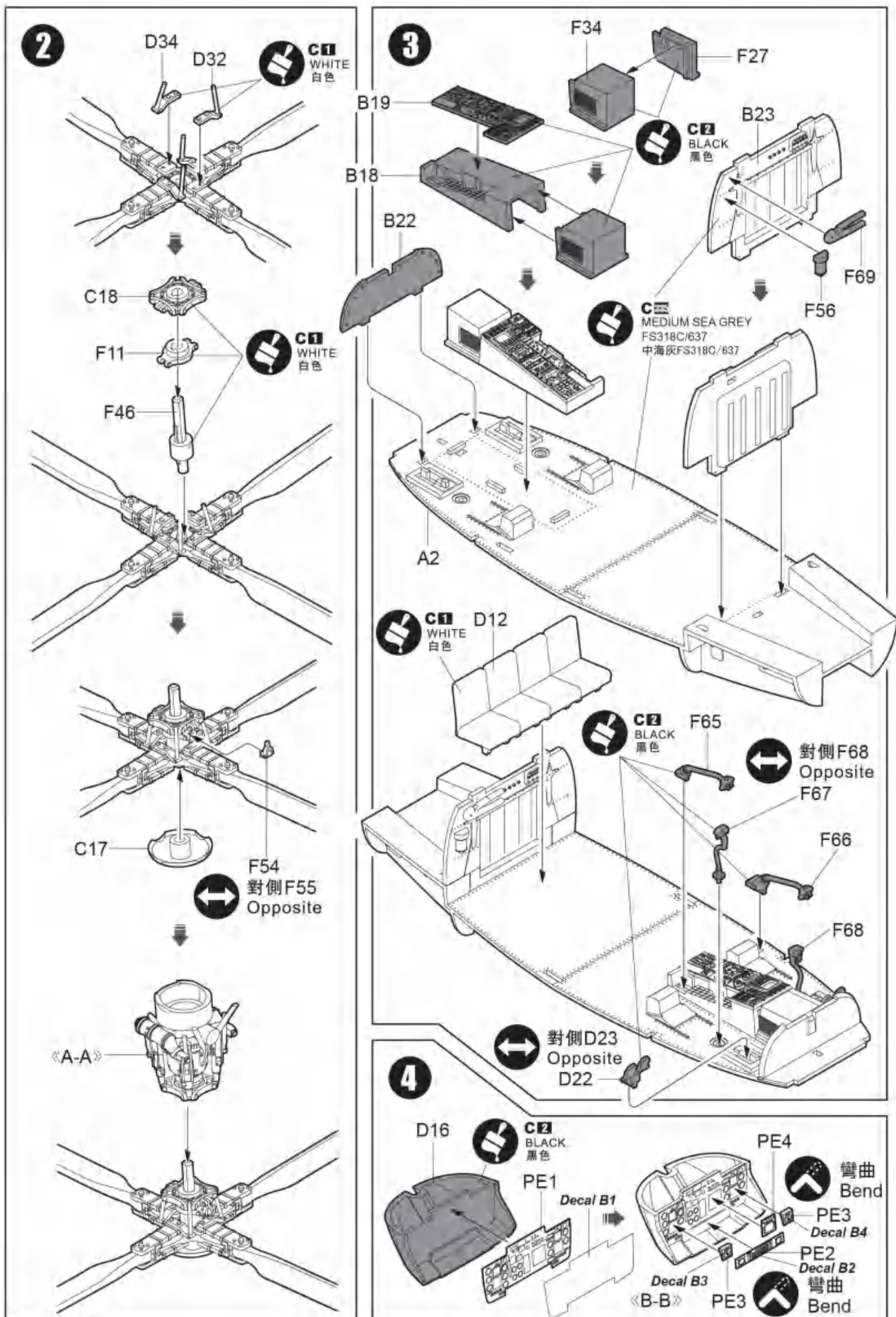
Decal B
水贴纸B



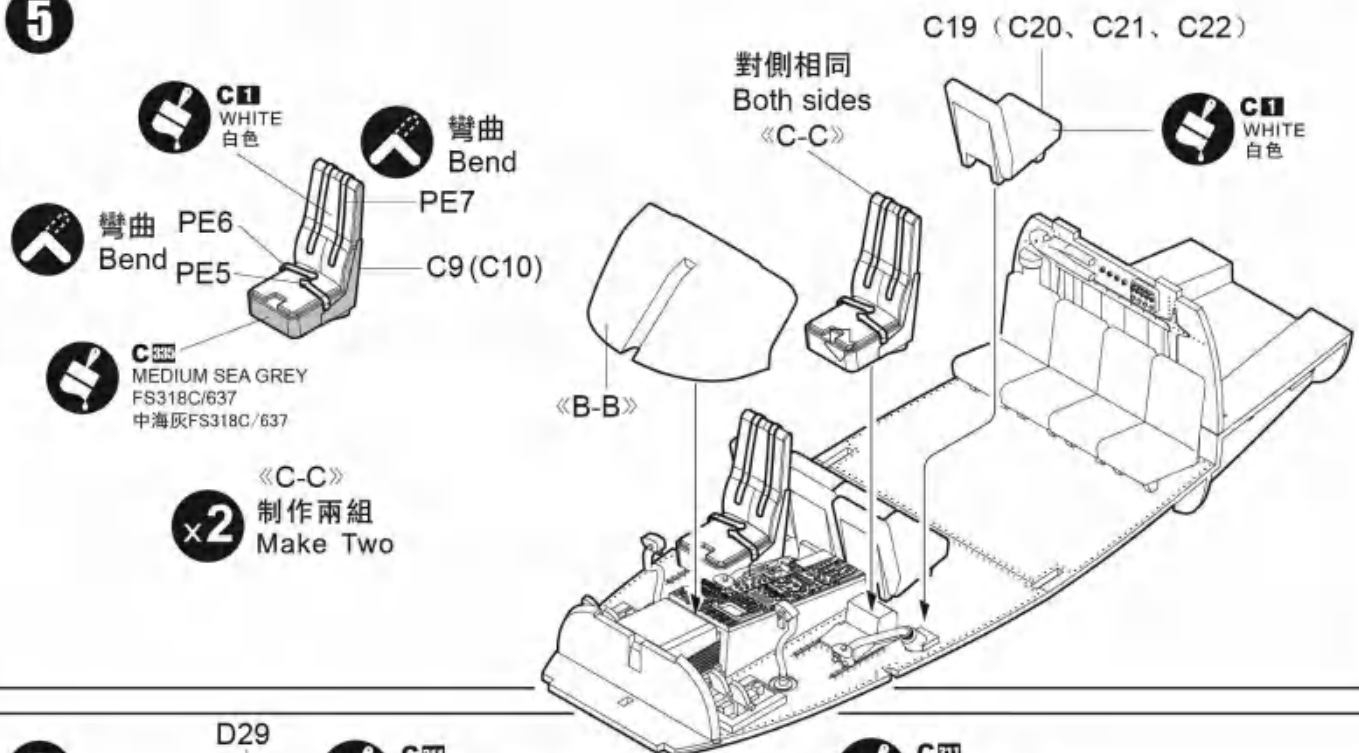
蚀刻片PE



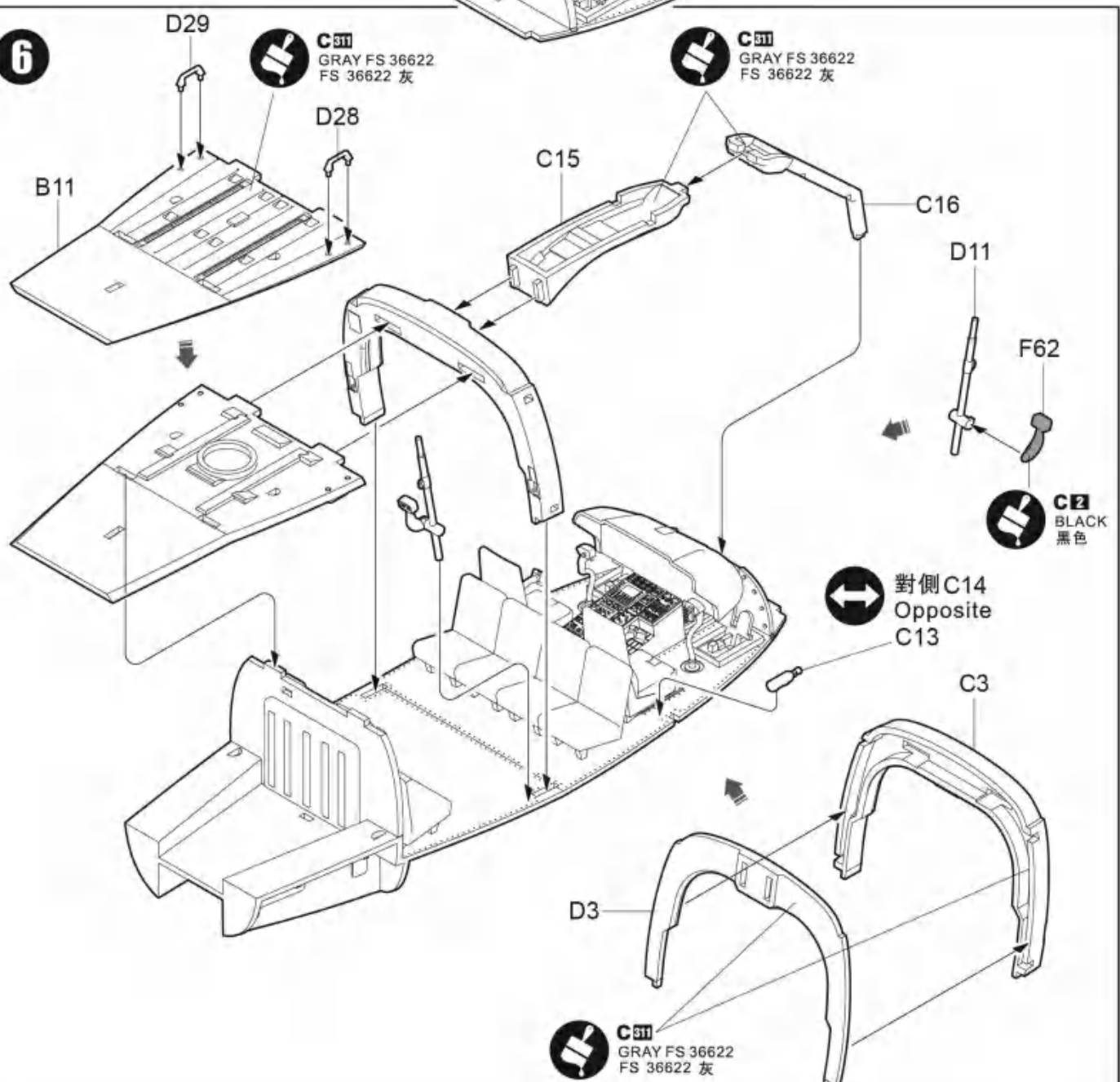




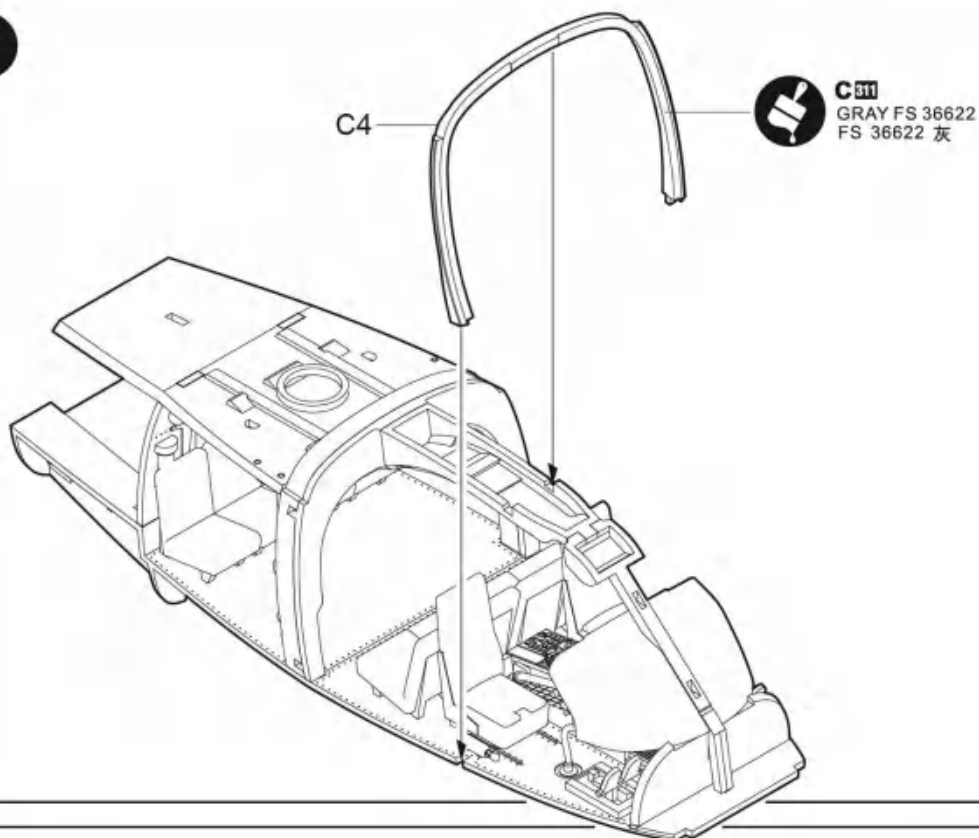
5



6

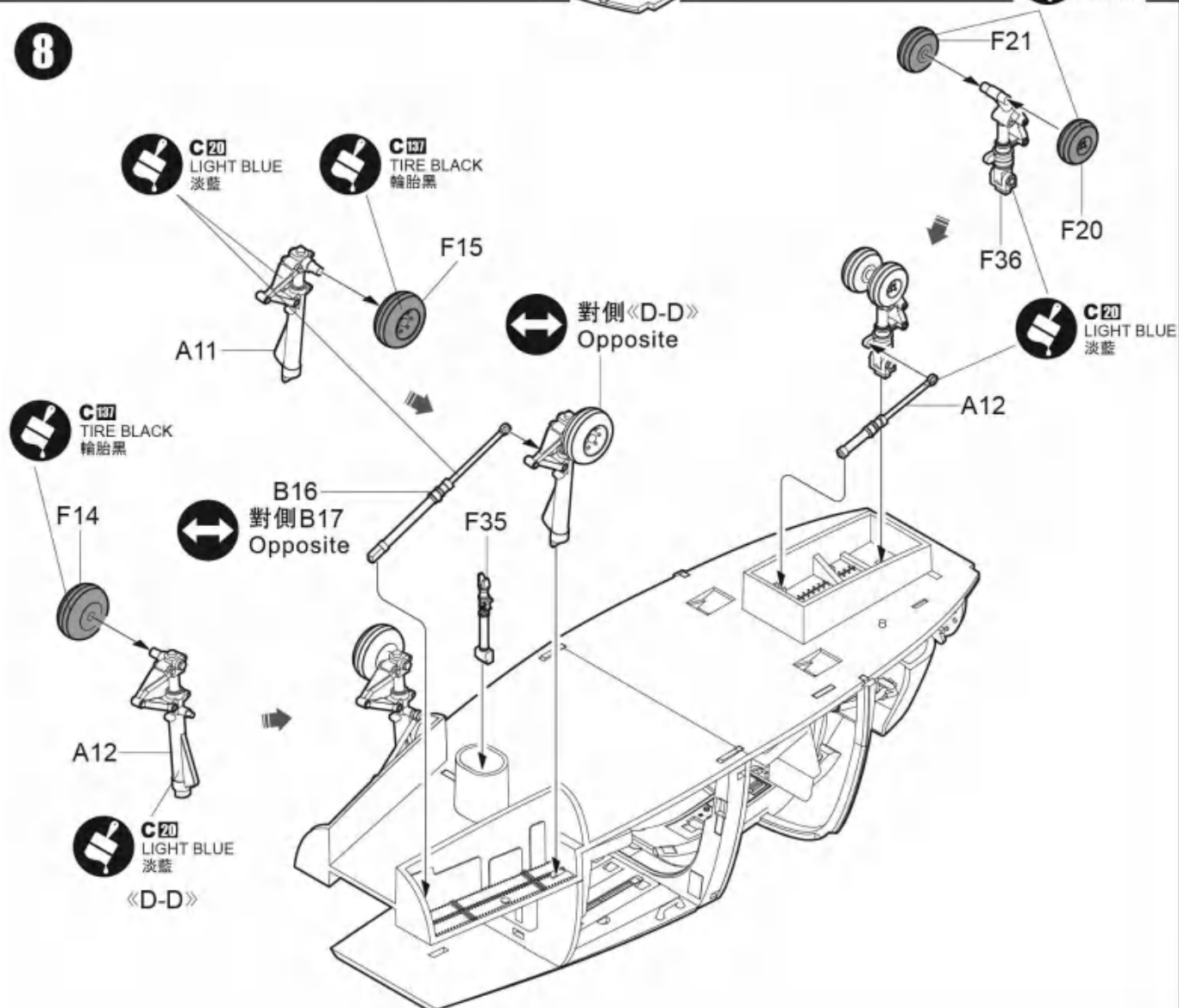


7

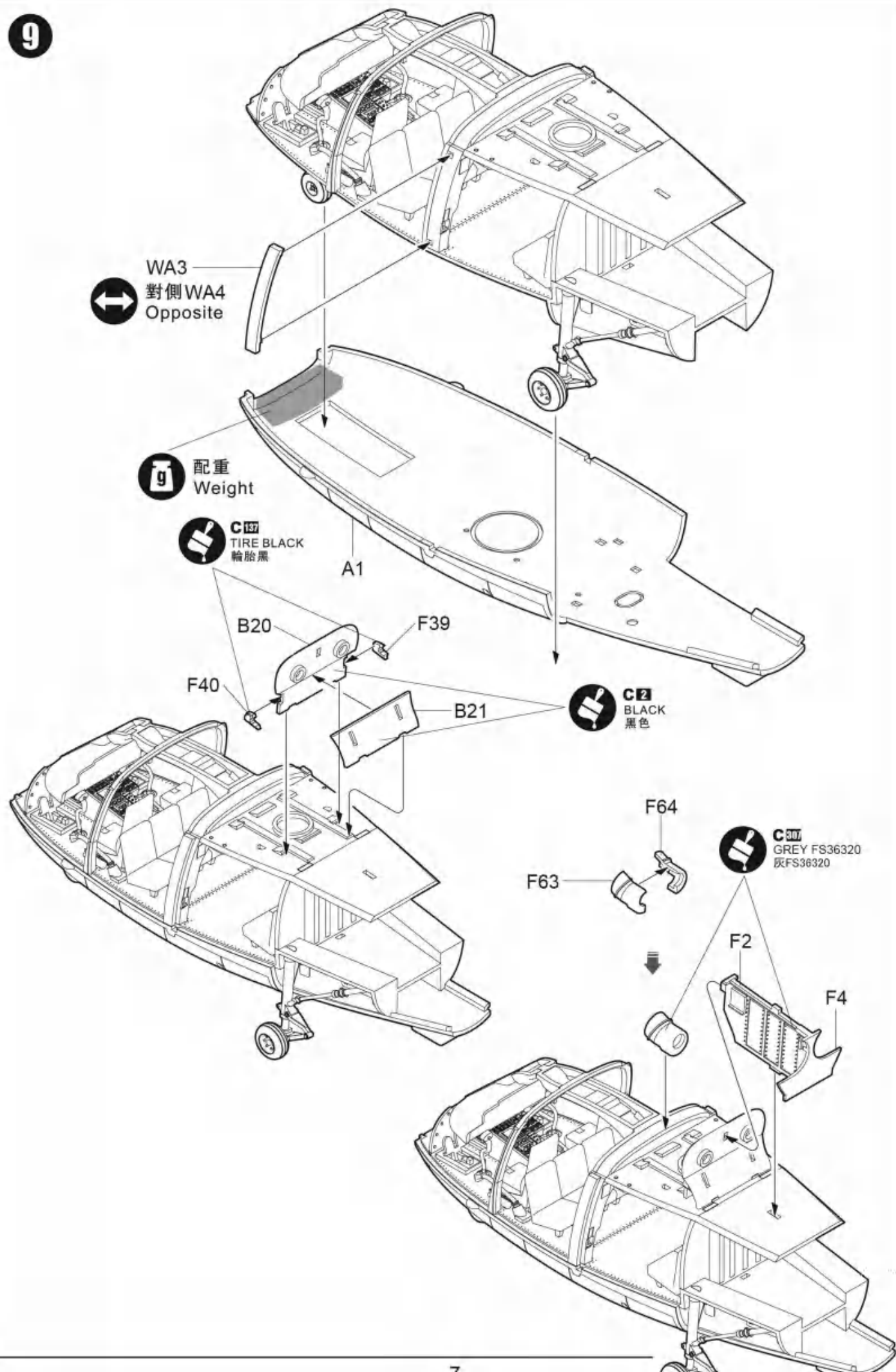


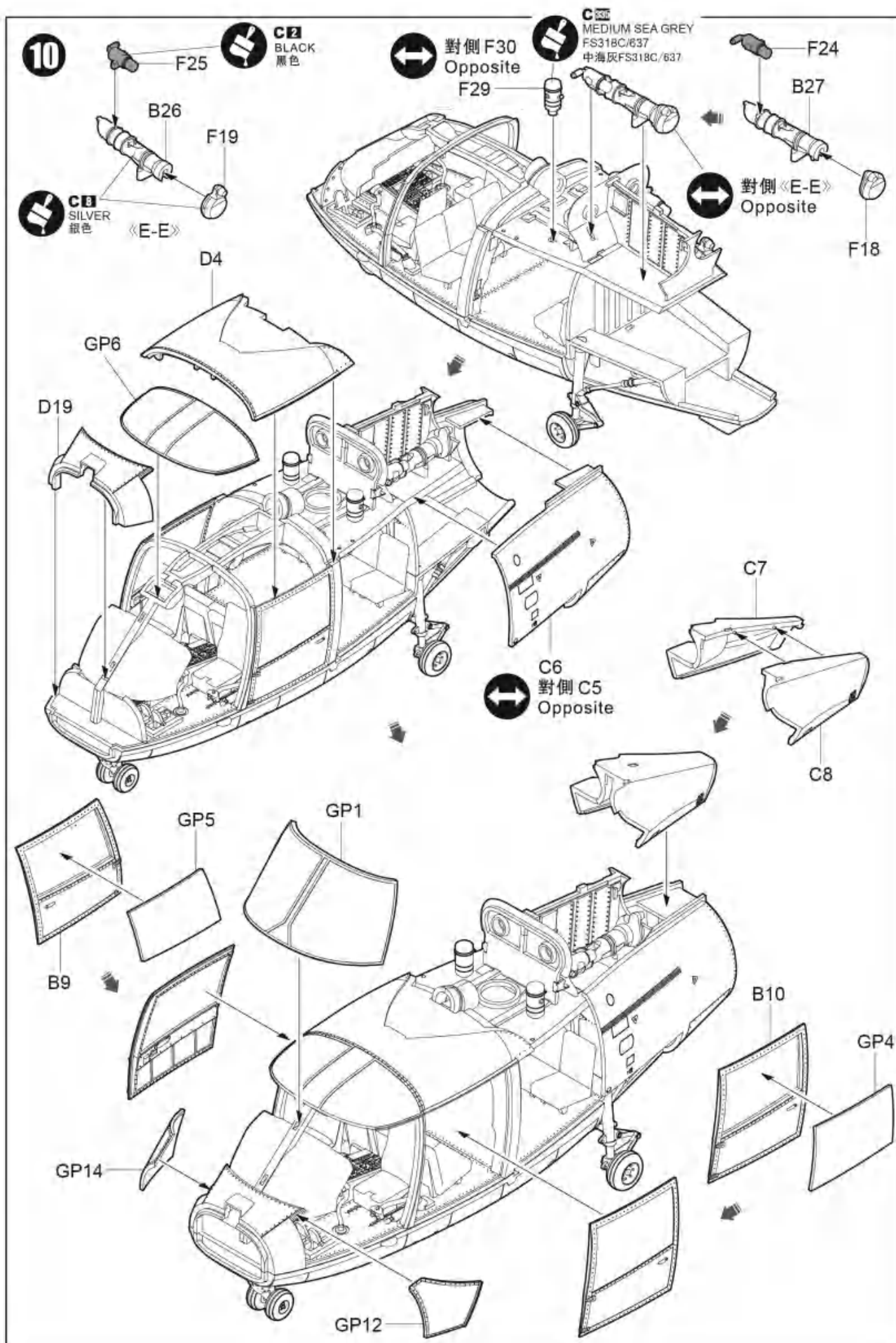
C137
TIRE BLACK
輪胎黑

8

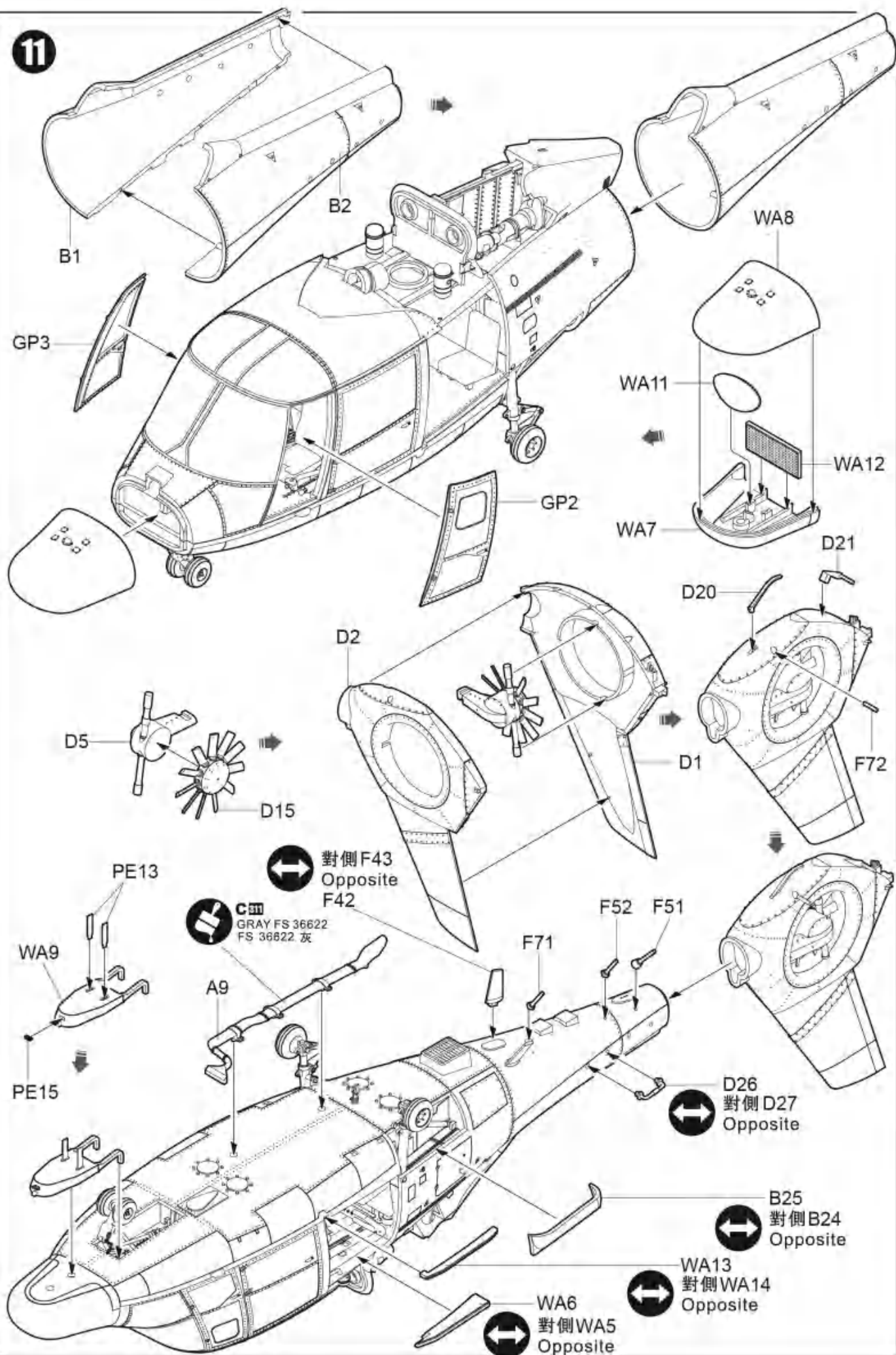


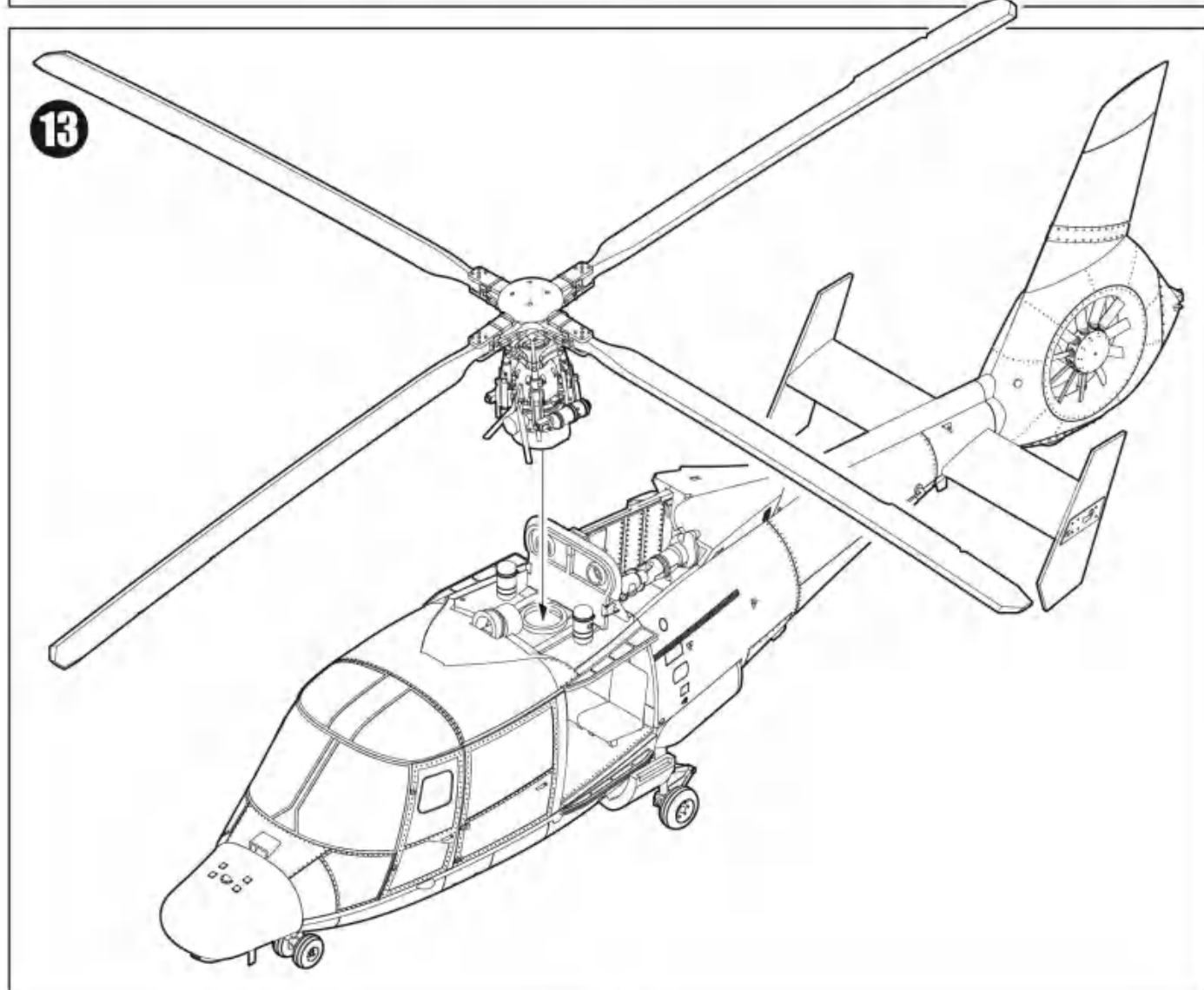
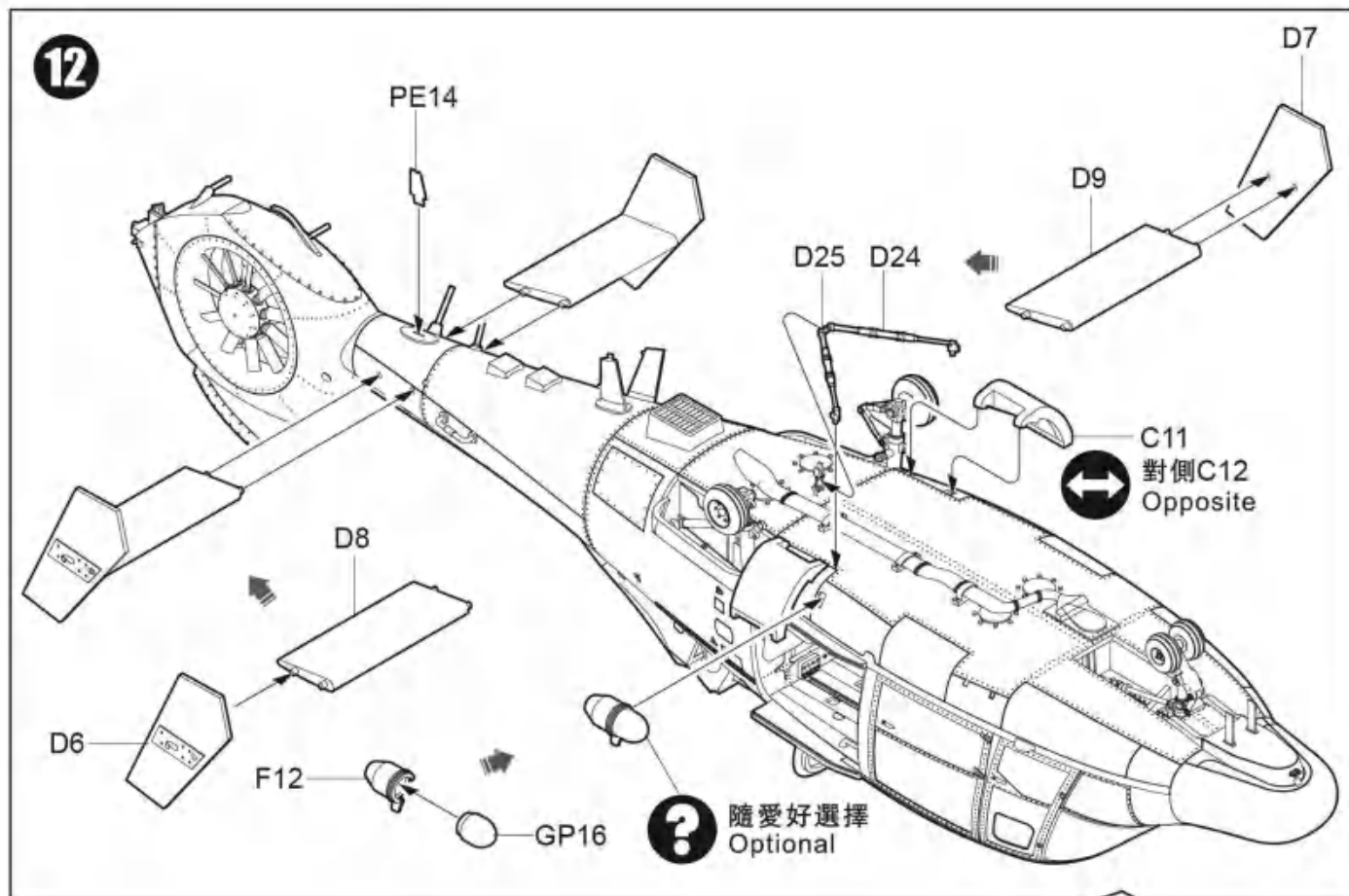
9

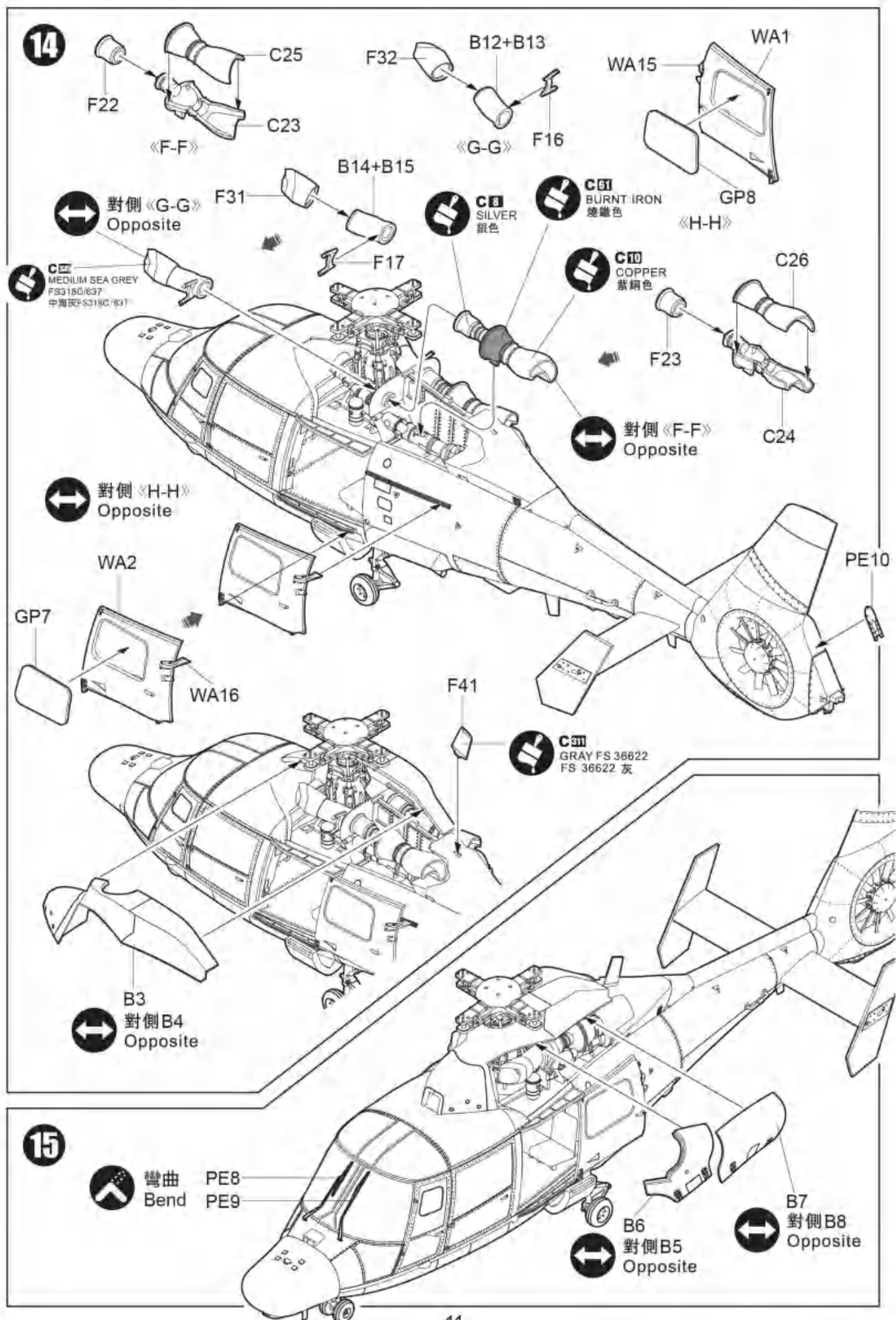




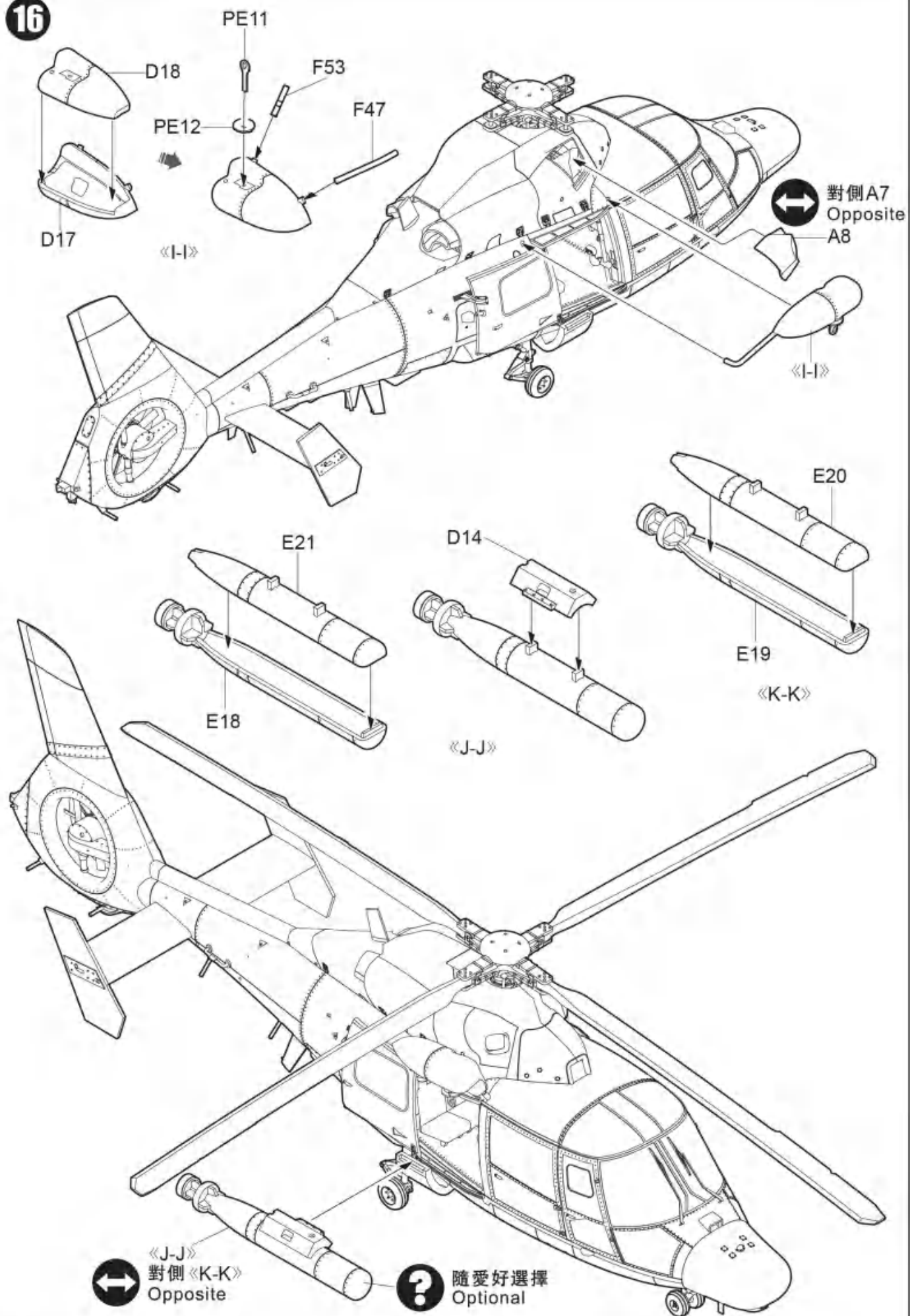
11







16



● 建築師事務所

E. ALLIS, CNRS, M32 Base d'Aéronautique Navale HYÈRES, France



Painting & marking Guide

塗裝與水貼

SA 565SA, Flotille 36F, No.486 Base d'Aéronautique Navale HYÈRES, France

